

AXP Expiration Months: [AprV/k2](#) | [Apr11](#) | [May11](#) | [Jul11](#) | [Oct11](#) | [Jan12](#) | [Jan13](#)

Calls							Puts							
Last	Chg	Bid	Ask	Vol	Oplnt	Action	▲ Strike ▼	Last	Chg	Bid	Ask	Vol	Oplnt	Action
May11 Calls							May11 Puts							
(42 days to expiration)														
7.60	0	8.10	8.50	00	3	Trade Detail	38.00	0.12	0	0.10	0.12	00	241	Trade Detail
6.64	+0.59	6.20	6.55	05	65	Trade Detail	40.00	0.23	0	0.18	0.20	00	488	Trade Detail
5.34	0	5.55	5.60	00	36	Trade Detail	41.00	0.28	-0.04	0.26	0.28	42	1,076	Trade Detail
4.75	0	4.35	4.70	00	41	Trade Detail	42.00	0.40	-0.03	0.36	0.38	77	349	Trade Detail
3.55	+0.05	3.30	3.85	71	140	Trade Detail	43.00	0.54	-0.08	0.51	0.53	33	953	Trade Detail
3.05	+0.15	3.00	3.10	1,049	446	Trade Detail	44.00	0.77	-0.02	0.72	0.74	88	528	Trade Detail
2.32	+0.05	2.30	2.33	1,347	1,357	Trade Detail	45.00	0.99	-0.11	1.00	1.03	57	1,120	Trade Detail
1.70	+0.10	1.38	1.71	363	2,472	Trade Detail	46.00	1.52	-0.10	1.38	1.40	184	935	Trade Detail
1.09	-0.06	1.17	1.19	347	3,896	Trade Detail	47.00	1.96	+0.01	1.86	1.90	04	793	Trade Detail
0.78	+0.07	0.77	0.79	322	5,168	Trade Detail	48.00	2.52	-0.13	2.45	2.50	03	168	Trade Detail
0.43	-0.06	0.48	0.50	27	2,715	Trade Detail	49.00	3.15	0	3.15	3.25	30	10	Trade Detail
0.30	+0.01	0.29	0.30	36	2,356	Trade Detail	50.00	3.95	-0.85	3.95	4.20	10	24	Trade Detail
0.07	-0.01	0.36	0.08	39	1,003	Trade Detail	52.50	6.80	0	6.20	6.50	00	2	Trade Detail
0	0	0	0.07	00	0	Trade Detail	55.00	0	0	8.60	9.05	00	0	Trade Detail

1-1

AXP Expiration Months: [AprV/k2](#) | [Apr11](#) | [May11](#) | [Jul11](#) | [Oct11](#) | [Jan12](#) | [Jan13](#)

Calls							Puts							
Last	Chg	Bid	Ask	Vol	Oplnt	Action	▲ Strike ▼	Last	Chg	Bid	Ask	Vol	Oplnt	Action
May11 Calls							May11 Puts							
(42 days to expiration)														
7.60	0	8.10	8.50	00	3	Trade Detail	38.00	0.12	0	0.10	0.12	00	241	Trade Detail
6.64	+0.59	6.20	6.55	05	65	Trade Detail	40.00	0.23	0	0.18	0.20	00	488	Trade Detail
5.34	0	5.55	5.60	00	36	Trade Detail	41.00	0.28	-0.04	0.26	0.28	42	1,076	Trade Detail
4.75	0	4.35	4.70	00	41	Trade Detail	42.00	0.40	-0.03	0.36	0.38	77	349	Trade Detail
3.55	+0.05	3.30	3.85	71	140	Trade Detail	43.00	0.54	-0.08	0.51	0.53	33	953	Trade Detail
3.05	+0.15	3.00	3.10	1,049	446	Trade Detail	44.00	0.77	-0.02	0.72	0.74	88	528	Trade Detail
2.32	+0.05	2.30	2.33	1,347	1,357	Trade Detail	45.00	0.99	-0.11	1.00	1.03	57	1,120	Trade Detail
1.70	+0.10	1.38	1.71	363	2,472	Trade Detail	46.00	1.52	-0.10	1.38	1.40	184	935	Trade Detail
1.09	-0.06	1.17	1.19	347	3,896	Trade Detail	47.00	1.96	+0.01	1.86	1.90	04	793	Trade Detail
0.78	+0.07	0.77	0.79	322	5,168	Trade Detail	48.00	2.52	-0.13	2.45	2.50	03	168	Trade Detail
0.43	-0.06	0.48	0.50	27	2,715	Trade Detail	49.00	3.15	0	3.15	3.25	30	10	Trade Detail
0.30	+0.01	0.29	0.30	36	2,356	Trade Detail	50.00	3.95	-0.85	3.95	4.20	10	24	Trade Detail
0.07	-0.01	0.36	0.08	39	1,003	Trade Detail	52.50	6.80	0	6.20	6.50	00	2	Trade Detail
0	0	0	0.07	00	0	Trade Detail	55.00	0	0	8.60	9.05	00	0	Trade Detail

2-1

IBD Composite Rating	Earnings Per Share Growth Rating	Relative Price Strength Rating	Sales+Profit Margins+ROE	Accumulation/Distribution (3 mos)
52-wk High	Dividend % Yield	Stock Price	Close	Vol % Chg
Symbol	Price	Chg	Vol 1000	P E

Common stocks above \$10 for Friday, April 8, 2011

1. ENERGY | **+0.3%** Daily Change | **+12.28%** Since Jan. 1

SECTOR LEADERS

999594 AC 110 ▶ ConchoRn CXO 106.2 +1.87 -21 798 38:
 KEY DATA: EPS 3 Q Avg 71%, LQ 21%, Next Q 31%, Sales 3Q Avg 94%,
 LQ 89%, Next Yr EPS 41%, Pretax 41%, ROE 14%, EPS due 05/05

43	170	DB-24.0	ATPQ&G	ATPG	17.55	+0.45	-1.20m	...
96	9679	A D-58.0	AIHId	4.1 AHGP	51.83	+0.38	-57	5617:
99	9690	A C+ 84.1	AIcRes	4.2 ARLP	81.07	+0.05	-72	3212:
77	2598	EA 15.6	AlonUSA	1.2 ALJ	13.78	-0.42	-13	388 ...
66	5157	BD+ 68.1	AlphaNtRs	ANR	57.10	-0.39	-53	3.5m 26:
62	6969	BC- 17.5	AmerscoA	AMRC	14.56	-0.04	-66	4421k
40	4037	BE 51.5	Amerigas	6.0 APU	47.10	-0.44	-27	5927:
31	687	DD+ 34.0	Amyris	AMRS	27.47	+0.07	+104	293 ...
92	8285	CD+ NH	Anadarko	.4 APC	84.71	+1.37	+34	4.7m 47:
87	6272	AB- 132	Apache	.5 APA	130.2	+1.37	-23	3.1m 14:
95	7299	BC 34.9	Approachn	AREX	31.09	-0.33	-63	11381k
86	7977	CC+ 37.0	ArchCoal	1.2 ACI	34.53	+0.30	-18	3.5m 30:
80	5699	DA- 23.2	AtlasEn	1.2 AHD	22.73	-0.10	-91	104 ...
74	4598	DB+ 34.9	AtlasPi	4.4 APL	33.74	+0.19	-47	289 ...
85	7387	BD+ 46.9	AtwoodOcn	ATW	44.83	-0.06	-48	37211:
40	3741	AD+ 61.0	BPplc	3.6 BP	46.74	-0.21	-5	8.9m 6:
62	7251	AD 131	BPPrdh	7.8 BPT	123.5	+1.53	-18	144.12o
95	7989	BB 75.1	BakrHugh	.8 BHI	71.57	+0.35	-18	4.2m 31:
80	5969	BB 43.3	BarrettBl	BBG	41.99	-0.10	-33	54824:
91	4999	DB+ NH	BasicEn	BAS	26.07	+1.93	+224	1.7m ...k
75	5593	BC+ NH	BaytexEn	4.0 BTE	61.07	+1.26	-1	25939o
75	2591	BB NH	BerryPe	.6 BRY	52.12	+0.06	-40	34734k
52	7236	AD+ 34.2	BdwkPpl	6.4 BWP	32.27	-0.04	-34	15021:
81	6575	CB- 15.4	BoltTech	r BOLT	14.05	+0.03	-69	821k
36	370	EC+ 23.1	BreitBrn	7.8 BBEP	21.20	+0.15	-55	18035
99	8295	AB 37.9	BrigmExp	BEXP	35.56	-0.23	-44	1.4m 61:
73	6372	CC 52.4	Bristowgp	BRS	47.54	-0.76	-54	11415
98	6798	DA+ 11.6	BroncoDr	BRNC	10.40	-0.21	+31	513 ...
47	4725	BD+ 71.7	BuckeyeP	6.3 BPL	63.04	-0.11	-13	34325:
74	4687	EB- 38.1	CoGnGeoV	CGV	35.65	+0.02	-37	5499k
97	9683	AB+ 271	CNOOC	2.0 CEO	266.0	+0.47	-44	14214:
77	2899	CB- 24.4	CWREgyn	CVI	22.99	-0.42	-9	2.4m 69:
71	1991	DA 55.1	CabotO&G	.2 COG	53.13	-0.23	-54	74154:

GG (Goldcorp, Inc.) NYSE

© StockCharts.com

Basic Materials / Gold & Silver

Thursday 14-Apr-2011

Open: **52.62** Ask: **54.99** P/E: **25.45**

▲ **+2.33%**

High: **54.16** Ask Size: **3** EPS: **2.12**

Chg: **+1.23**

Low: **52.59** Bid: **52.52** Last: **0 shrs**

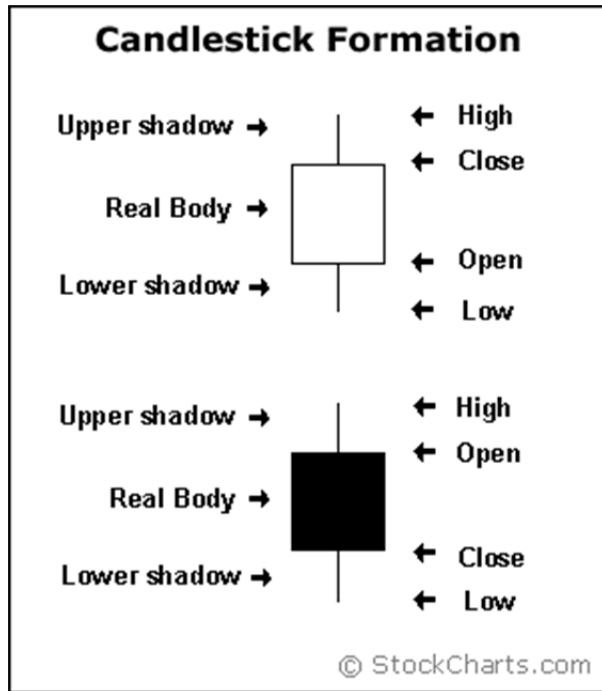
Last: **53.96**

Prev Close: **52.73** Bid Size: **3** VWAP:

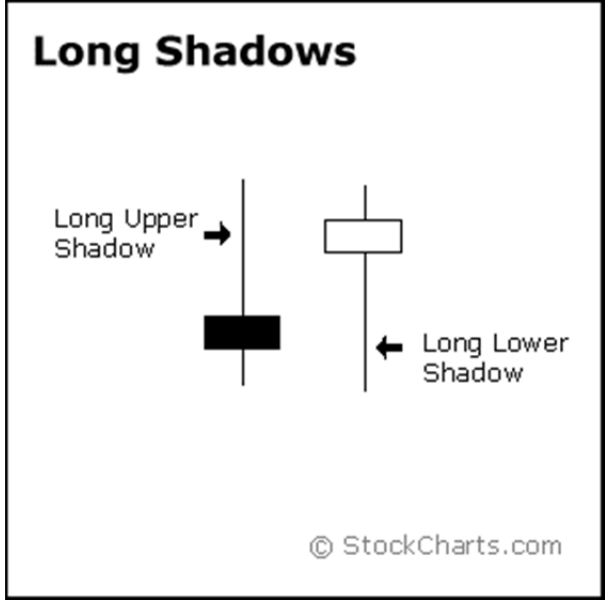
Volume: **8,354,805**



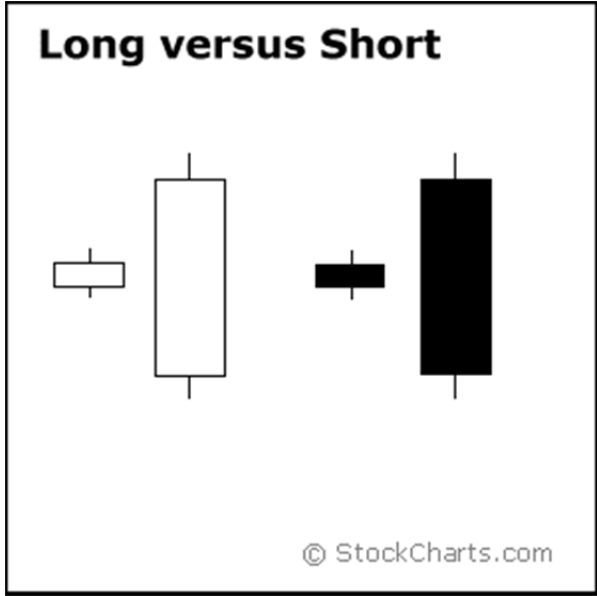
4-1



4-2a



4-2b



4-3

Marubozu



White
Marubozu



Black
Marubozu

© StockCharts.com

4-4



4-5



4-6



4-7



4-8



4-9

LM (Legg Mason, Inc.) NYSE

© StockCharts.com

Financial / Investment Services

Friday 15-Apr-2011

Open: **36.75** Ask: **37.24** P/E: **22.93**
 High: **36.88** Ask Size: **2** EPS: **1.60**
 Low: **36.47** Bid: **36.14** Last: **↑ 33364 shrs**
 Prev Close: **36.59** Bid Size: **3** VWAP: **36.72**

▲ **+0.27%**
 Chg: **+0.10**
 Last: **36.69**
 Volume: **970,674**



4-10

MICROSOFT CORP										Time & Sales	Chart	Volatility View	News
Symbol	Last	Change	Bid	Ask	High	Low	Volume	Chart		Microsoft			
MSFT	25.37	-0.05 ▼	25.36	25.37	0.00	0.00	0						

MSFT Strike Prices: 12.5 | 15 | 17.5 | 20 | 21 | 22 | 22.5 | 23 | 24 | 25 | 26 | 27 | 27.5 | 28 | 29 | 30 | 31 | 32 | 32.5 | 33 | 35 | 37.5 | 40 | 45

Calls						25	Puts						
Last	Chg	Bid	Ask	Vol	Opint	Month	Last	Chg	Bid	Ask	Vol	Opint	Action
0.88	0	0.86	0.89	00	34,378	May11	0.58	0	0.57	0.59	00	63,611	Trade Watch Calc Detail
1.04	0	1.04	1.06	00	6,070	Jun11	0.80	0	0.78	0.80	00	9,676	Trade Watch Calc Detail
1.24	0	1.22	1.24	00	22,365	Jul11	1.00	0	0.96	0.99	00	21,091	Trade Watch Calc Detail
0	0	0	0	00	0	Aug11	0	0	0	0	00	0	Trade Watch Calc Detail
1.75	0	1.75	1.77	00	5,876	Oct11	1.61	0	1.61	1.63	00	13,098	Trade Watch Calc Detail
2.22	0	2.21	2.24	00	138,144	Jan12	2.19	0	2.16	2.19	00	139,889	Trade Watch Calc Detail
3.30	0	3.25	3.40	00	64,712	Jan13	3.60	0	3.60	3.65	00	43,822	Trade Watch Calc Detail

4-11

FMCN (Focus Media Holdings Ltd.) Nasdaq GM

© StockCharts.com

Services / Advertising				Friday 15-Apr-2011
Open:	33.70	Ask: 34.33	P/E: 27.42	▲ +2.00%
High:	34.32	Ask Size: 5	EPS: 1.25	Chg: +0.67
Low:	33.05	Bid: 28.00	Last: ↓ 12898 shrs	Last: 34.27
Prev Close:	33.60	Bid Size: 12	VWAP: 33.69	Volume: 2,306,749



4-12

BTU (Peabody Energy Corp.) NYSE

© StockCharts.com

Energy / Coal				Friday 15-Apr-2011
Open:	65.85	Ask: 65.85	P/E: 22.85	▼ -0.29%
High:	65.99	Ask Size: 1	EPS: 2.87	Chg: -0.19
Low:	65.00	Bid: 65.61	Last: ↑ 189037 shrs	Last: 65.57
Prev Close:	65.76	Bid Size: 1	VWAP: 65.49	Volume: 5,055,322



4-13

DE (Deere & Co.) NYSE

© StockCharts.com

Capital Goods / Constr. & Agric. Machinery

Friday 15-Apr-2011

Open: 94.32 Ask: P/E: 18.79

▼ -0.52%

High: 94.49 Ask Size: 0 EPS: 4.99

Chg: -0.49

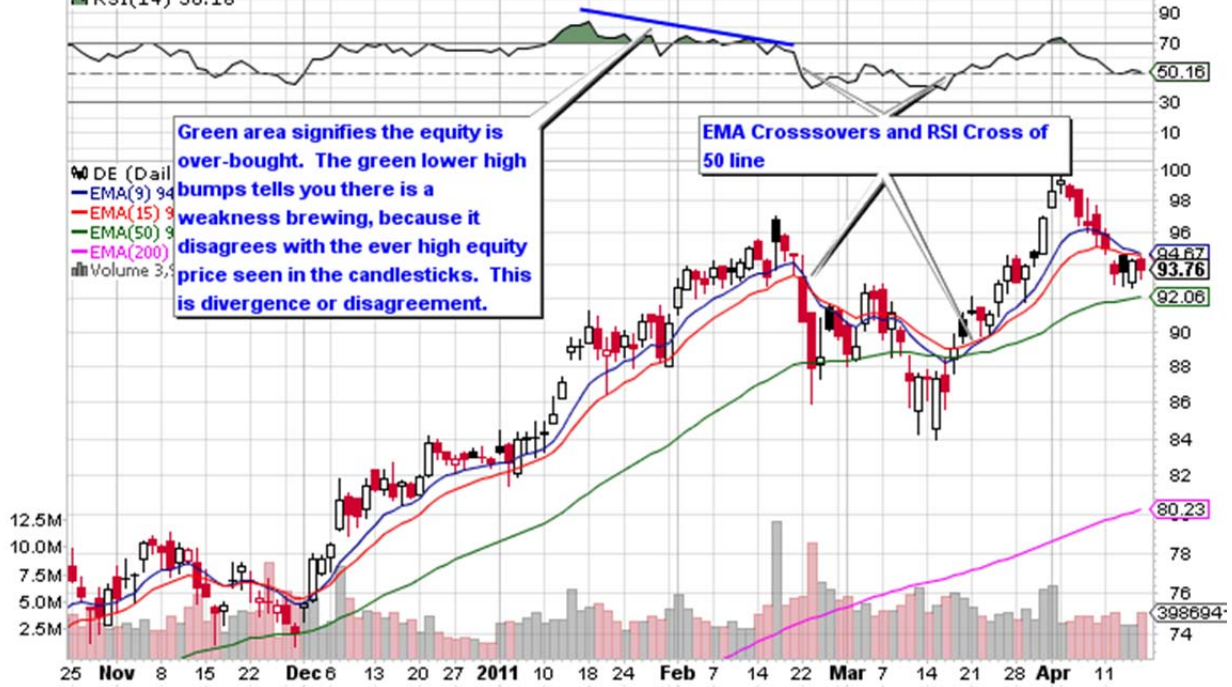
Low: 93.19 Bid: 81.78 Last: 154002 shrs

Last: 93.76

Prev Close: 94.25 Bid Size: 2 VWAP: 93.73

Volume: 3,986,941

▲ RSI(14) 50.16



MA (Mastercard) NYSE

© StockCharts.com

Financial / Consumer Financial Services

Friday 15-Apr-2011

Open: 269.01 Ask: P/E: 19.04

▼ -0.48%

High: 269.47 Ask Size: 0 EPS: 14.05

Chg: -1.29

Low: 264.19 Bid: 255.20 Last: ↓ 24079 shrs

Last: 267.58

Prev Close: 268.87 Bid Size: 1 VWAP: 266.76

Volume: 1,241,247



MCP (Molycorp Inc.) NYSE

© StockCharts.com

Basic Materials / Metal Mining

Friday 15-Apr-2011

Open: 72.85 Ask: 74.11 P/E:
High: 75.00 Ask Size: 1 EPS:
Low: 72.09 Bid: 73.67 Last: ↑ 18658 shrs
Prev Close: 73.37 Bid Size: 5 VWAP: 74.07

▲ +1.16%
Chg: +0.85
Last: 74.22
Volume: 6,723,624

▲ RSI(14) 72.86



CREE (Cree, Inc.) Nasdaq GS

© StockCharts.com

Technology / Semiconductors

Friday 15-Apr-2011

Open: 40.68 Ask: 41.95 P/E: 22.07

▲ +1.10%

High: 42.09 Ask Size: 1 EPS: 1.87

Chg: +0.45

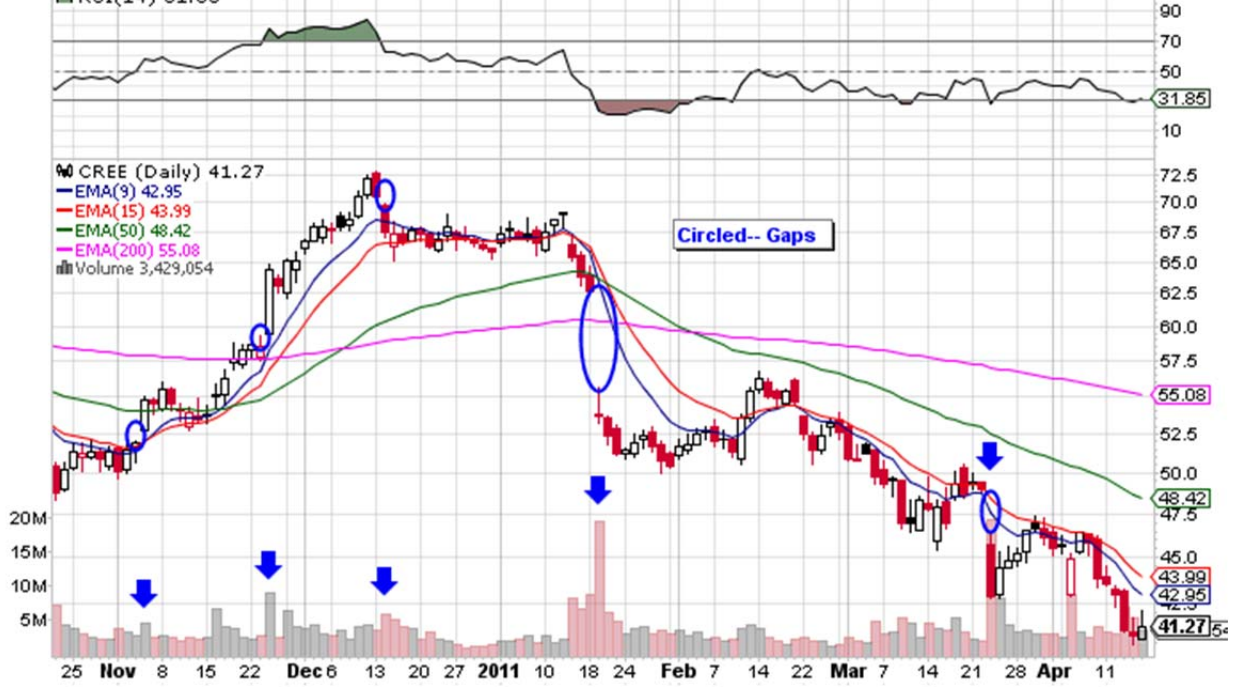
Low: 40.68 Bid: 40.90 Last: 1550 shrs

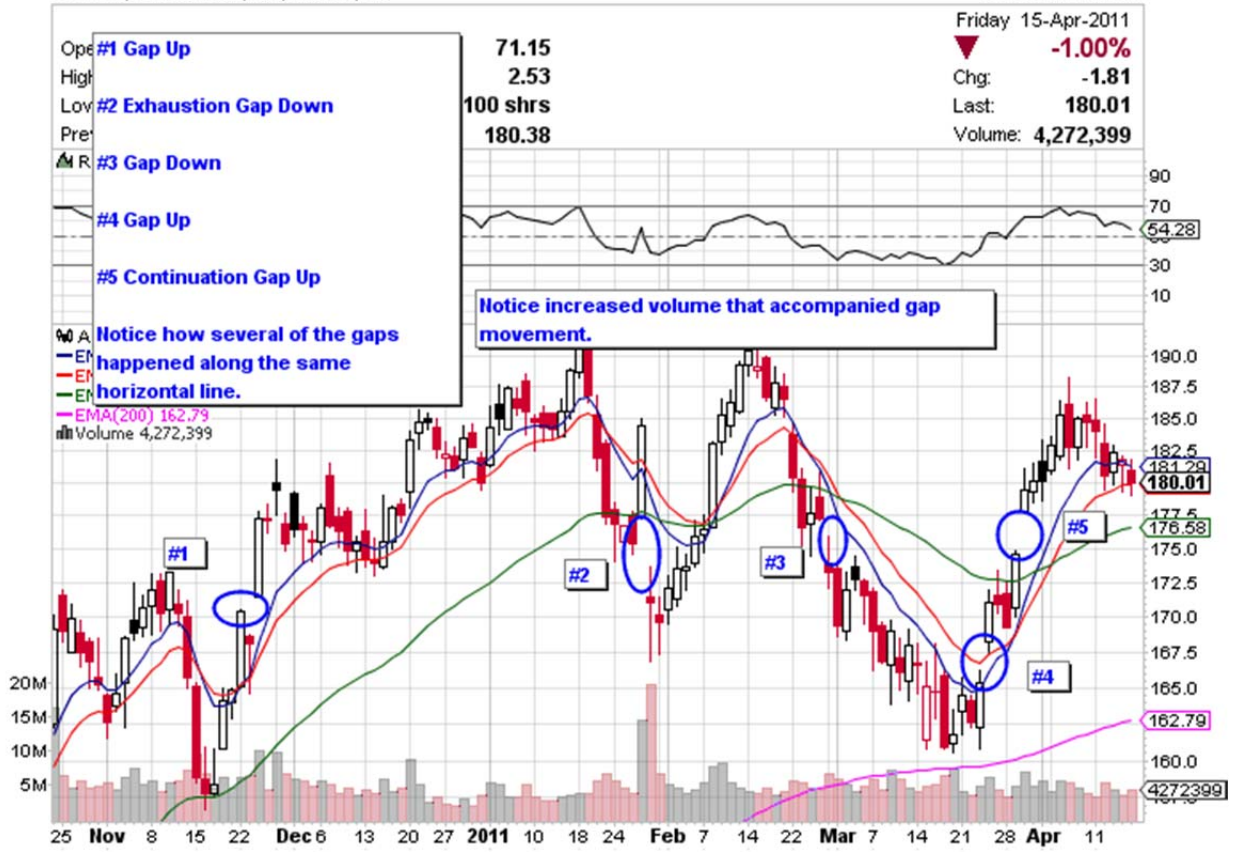
Last: 41.27

Prev Close: 40.82 Bid Size: 25 VWAP: 41.42

Volume: 3,429,054

▲ RSI(14) 31.85





WCG (WellCare Group, Inc.) NYSE

© StockCharts.com

Financial / Insurance (Accident & Health)
Open: 41.58 Ask: 42.55 P/E: -32.47
High: 42.17 Ask Size: 3 EPS: -1.29
Low: 41.34 Bid: Last: ↑26008 shrs
Prev Close: 41.61 Bid Size: 0 VWAP: 41.86

Friday 15-Apr-2011
▲ +0.67%
Chg: +0.28
Last: 41.89
Volume: 316,370



AMGN (Amgen, Inc.) Nasdaq GS

© StockCharts.com

Healthcare / Biotechnology & Drugs

Friday 15-Apr-2011

Open: **55.03** Ask: **57.58** P/E: **11.59**

▲ **+1.24%**

High: **55.99** Ask Size: **4** EPS: **4.79**

Chg: **+0.68**

Low: **54.94** Bid: **51.44** Last: **364 shrs**

Last: **55.51**

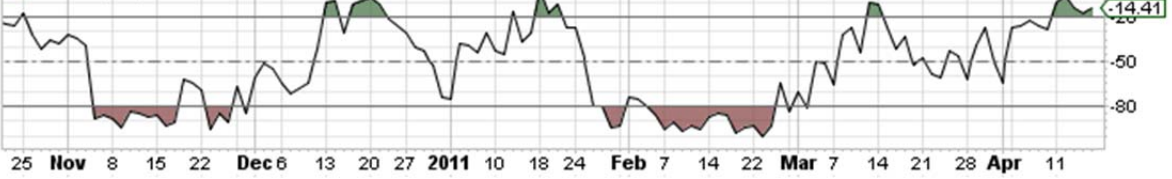
Prev Close: **54.83** Bid Size: **1** VWAP: **55.60**

Volume: **8,016,112**

▲ RSI(14) 66.49



▲ Wm%R(14) -14.41



AMGN (Amgen, Inc.) Nasdaq GS

© StockCharts.com

Healthcare / Biotechnology & Drugs

Friday 15-Apr-2011

Open: **55.03** Ask: **57.58** P/E: **11.59**

▲ **+1.24%**

High: **55.99** Ask Size: **4** EPS: **4.79**

Chg: **+0.68**

Low: **54.94** Bid: **51.44** Last: **364 shrs**

Last: **55.51**

Prev Close: **54.83** Bid Size: **1** VWAP: **55.60**

Volume: **8,016,112**

▲ RSI(14) 66.49



SLW (Silver Wheaton Corporation) NYSE

© StockCharts.com

Basic Materials / Gold & Silver

Friday 15-Apr-2011

Open: 43.37 Ask: 44.50 P/E: 51.34
 High: 43.85 Ask Size: 2 EPS: 0.83
 Low: 42.45 Bid: 29.00 Last: ↓ 8558 shrs
 Prev Close: 42.88 Bid Size: 1 VWAP: 43.13

▼ -0.63%
 Chg: -0.27
 Last: 42.61
 Volume: 14,743,739

▲ RSI(14) 49.05









GES (Guess ?, Inc.) NYSE
20-Apr-2011

© StockCharts.com

Open 39.28 High 40.13 Low 38.99 Close 39.78 Volume 1.6M Chg +1.29 (+3.35%) ▲



ORCL (Oracle Corp.) Nasdaq GS

© StockCharts.com

20-Apr-2011

Open 34.18 High 34.37 Low 33.83 Close 34.11 Volume 24.8M Chg +0.44 (+1.31%) ▲

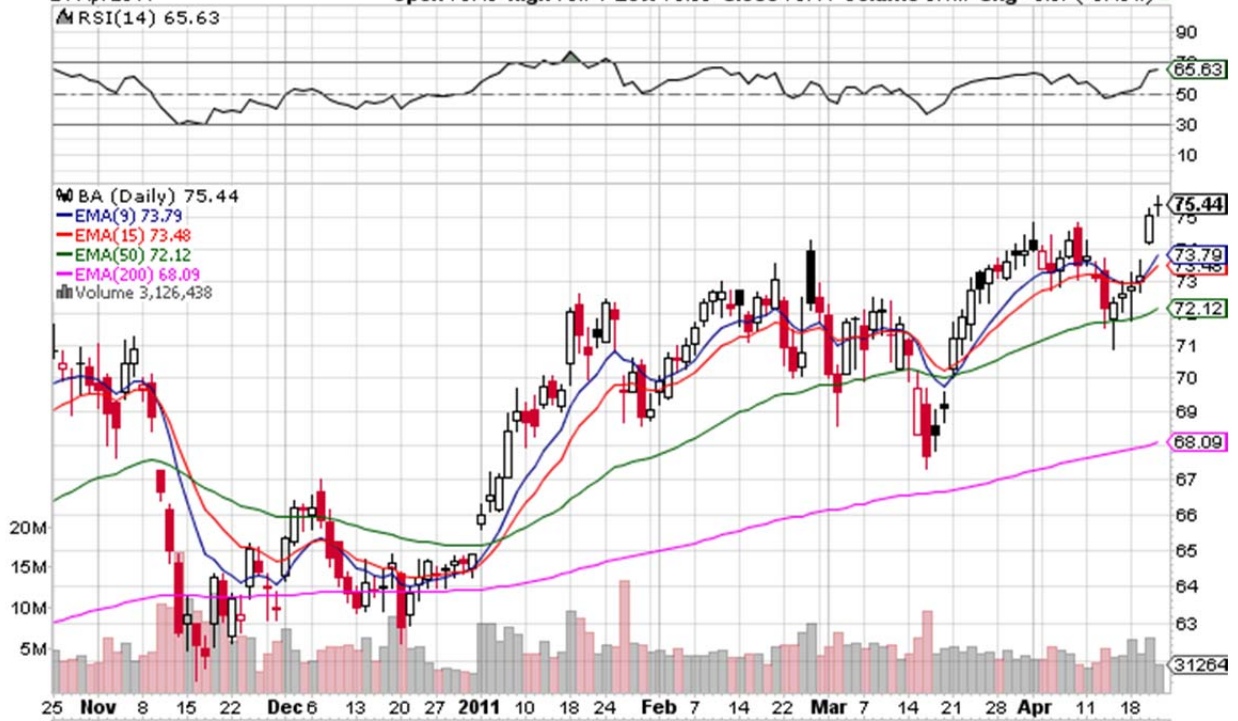
▲ RSI(14) 60.30



BA (Boeing Co.) NYSE
21-Apr-2011

Open 75.43 High 75.74 Low 75.08 Close 75.44 Volume 3.1M Chg +0.37 (+0.49%) ▲

© StockCharts.com





RGLD (Royal Gold, Inc.) Nasdaq GS

© StockCharts.com

21-Apr-2011

Open 59.19 High 60.74 Low 59.19 Close 60.20 Volume 1.2M Chg +1.87 (+3.21%) ▲

▲ RSI(14) 80.25

▲ RGLD (Daily) 60.20

— EMA(9) 56.09

— EMA(15) 54.90

— EMA(50) 52.15

— EMA(200) 50.00

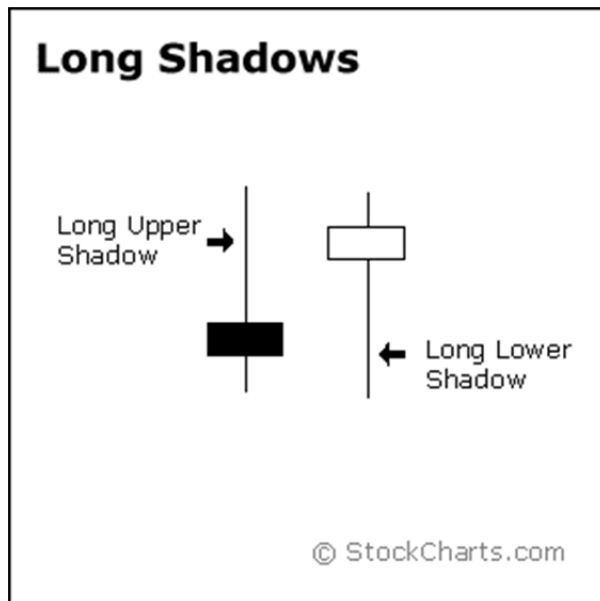
■ Volume 1,229,475

This pattern I call a squeeze. It is so important, I've written a book about it called the P3 System.





5-18



5-19

Option Pricer | Cov Calls | Straddles | Put Spreads | Call Spreads | Collars | Calendar Puts | Calendar Calls | Delta & Imp Vol | Previous

Symbol BA **Range** Near-the-Money **Type** Calls And Puts **Expiration** May11 [View Chain](#)
 Include Adjusted / Non-standard Options
[Find Symbol / Futures](#)

Time & Sales | Chart | Volatility View | News

Symbol	Last	Change	Bid	Ask	High	Low	Volume	Chart	
BA	75.44	+0.37 ▲	74.97	75.34	75.74	75.08	3,164,199		

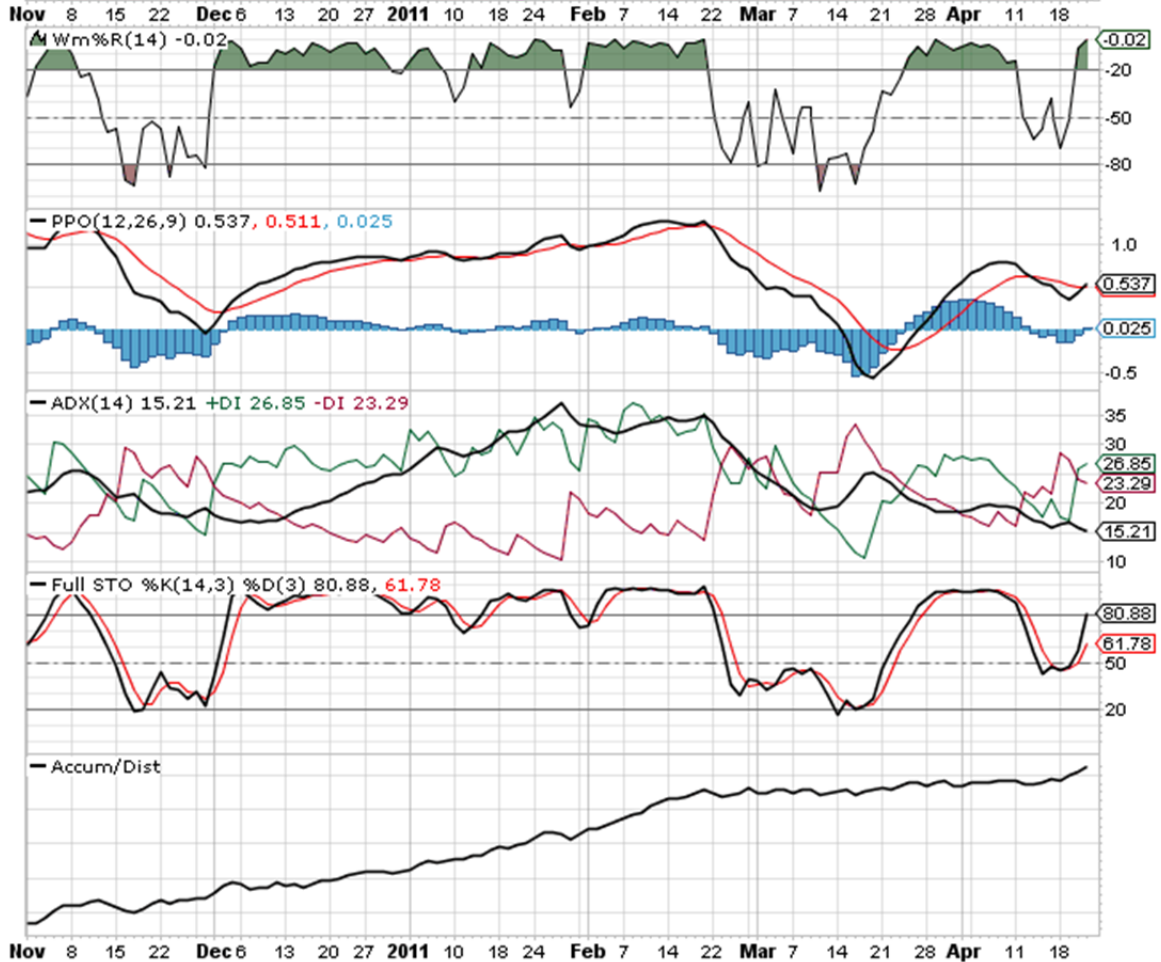
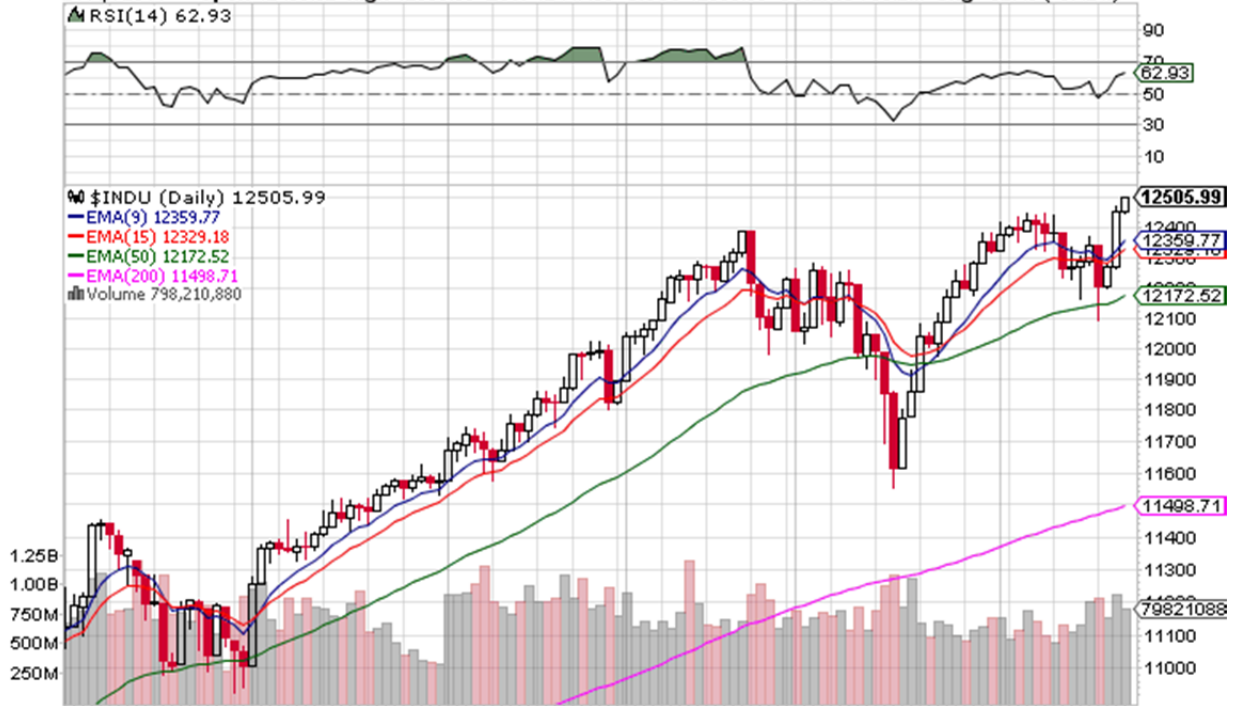
BA Expiration Months: [May11](#) | [Jun11](#) | [Aug11](#) | [Nov11](#) | [Jan12](#) | [Jan13](#)

Calls								Puts								
Last	Chg	Bid	Ask	Vol	Oplnt	Action	Strike	Last	Chg	Bid	Ask	Vol	Oplnt	Action		
May11 Calls (29 days to expiration)								BA @ 75.44	May11 Puts							
10.64	+0.34	10.40	10.50	18	4,200	Trade Detail	65.00	0.14	-0.02	0.14	0.15	69	6,049	Trade Detail		
8.00	+0.30	7.95	8.05	64	3,575	Trade Detail	67.50	0.26	-0.05	0.24	0.26	208	9,546	Trade Detail		
5.64	+0.14	5.60	5.70	114	7,883	Trade Detail	70.00	0.47	-0.10	0.45	0.47	265	7,385	Trade Detail		
3.48	+0.03	3.50	3.55	271	7,989	Trade Detail	72.50	0.92	-0.15	0.91	0.93	440	6,590	Trade Detail		
1.87	+0.03	1.86	1.88	1,253	19,271	Trade Detail	75.00	1.84	-0.24	1.81	1.83	360	4,259	Trade Detail		
0.83	+0.05	0.81	0.83	637	4,273	Trade Detail	77.50	3.35	-0.40	3.25	3.35	174	295	Trade Detail		
0.30	0	0.30	0.31	734	14,561	Trade Detail	80.00	5.25	-0.30	5.25	5.35	96	471	Trade Detail		
0.12	+0.03	0.10	0.12	33	189	Trade Detail	82.50	7.60	+7.60	7.55	7.65	11	0	Trade Detail		
0.05	+0.02	0.03	0.05	06	5,728	Trade Detail	85.00	10.15	-2.10	10.00	10.10	12	120	Trade Detail		

\$INDU (Dow Jones Industrial Average) INDX

© StockCharts.com

21-Apr-2011 **Open** 12453.62 **High** 12506.06 **Low** 12447.56 **Close** 12505.99 **Volume** 798.2M **Chg** +52.45 (+0.42%) ▲

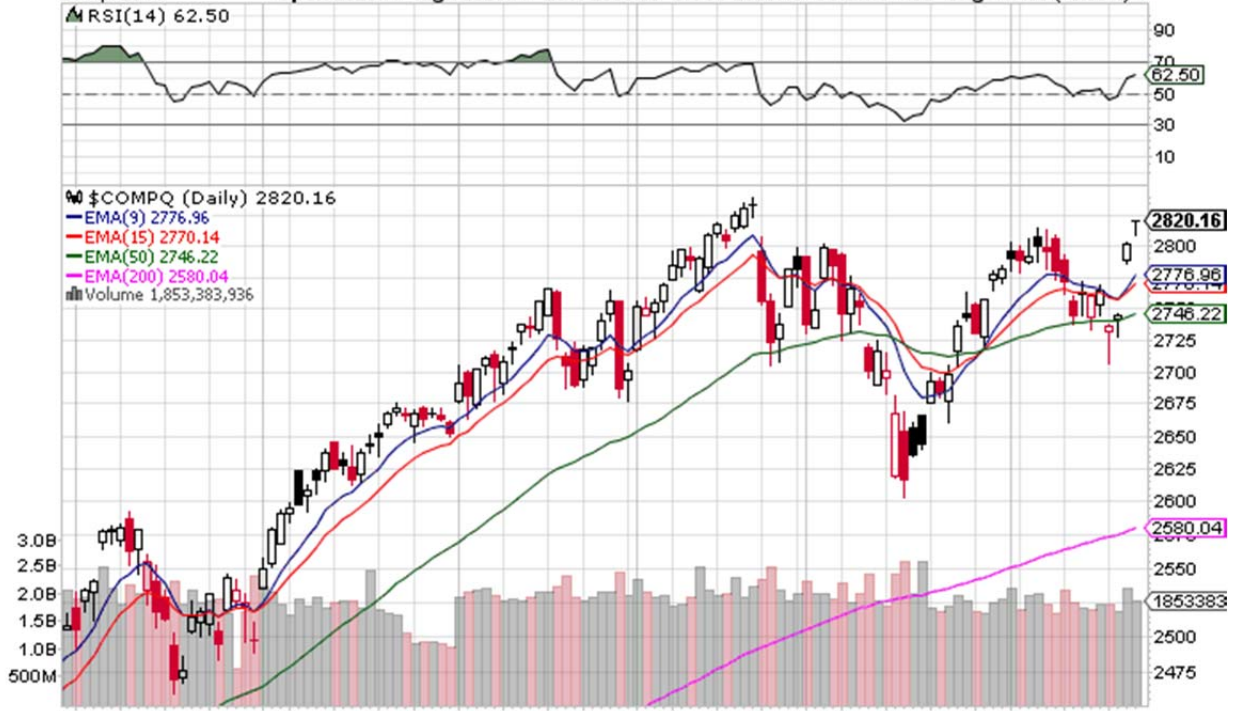


\$COMPQ (Nasdaq Composite) INDX

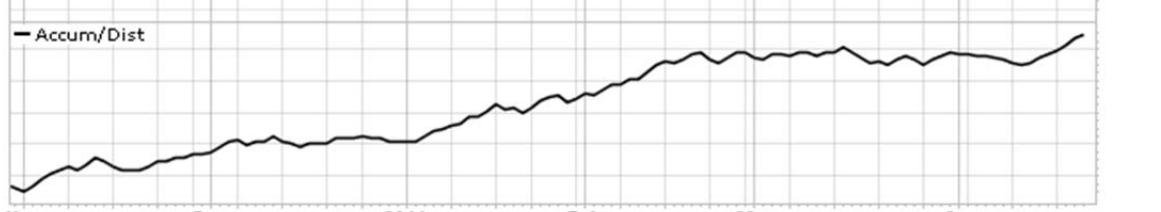
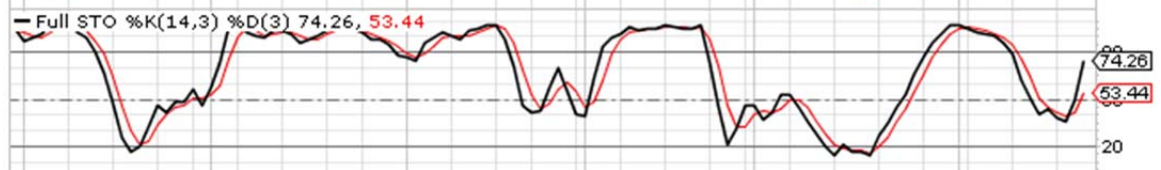
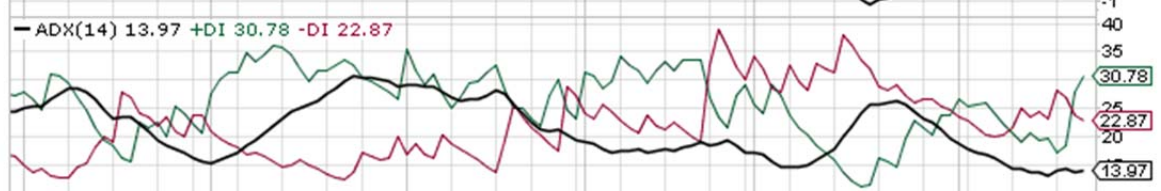
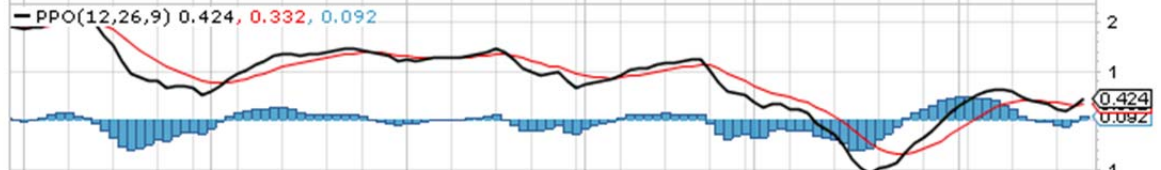
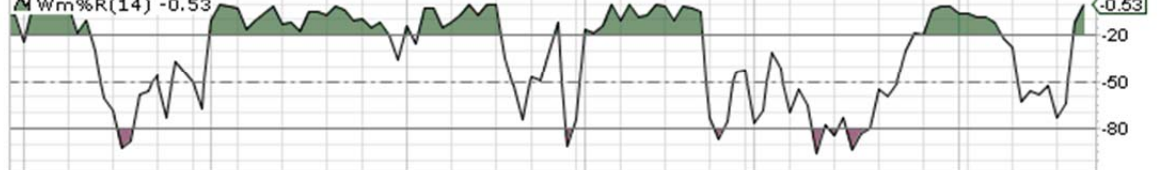
© StockCharts.com

21-Apr-2011

Open 2820.77 High 2820.77 Low 2808.55 Close 2820.16 Volume 1.9B Chg +17.65 (+0.63%) ▲



Nov 8 15 22 Dec 6 13 20 27 2011 10 18 24 Feb 7 14 22 Mar 7 14 21 28 Apr 11 18



Nov 8 15 22 Dec 6 13 20 27 2011 10 18 24 Feb 7 14 22 Mar 7 14 21 28 Apr 11 18

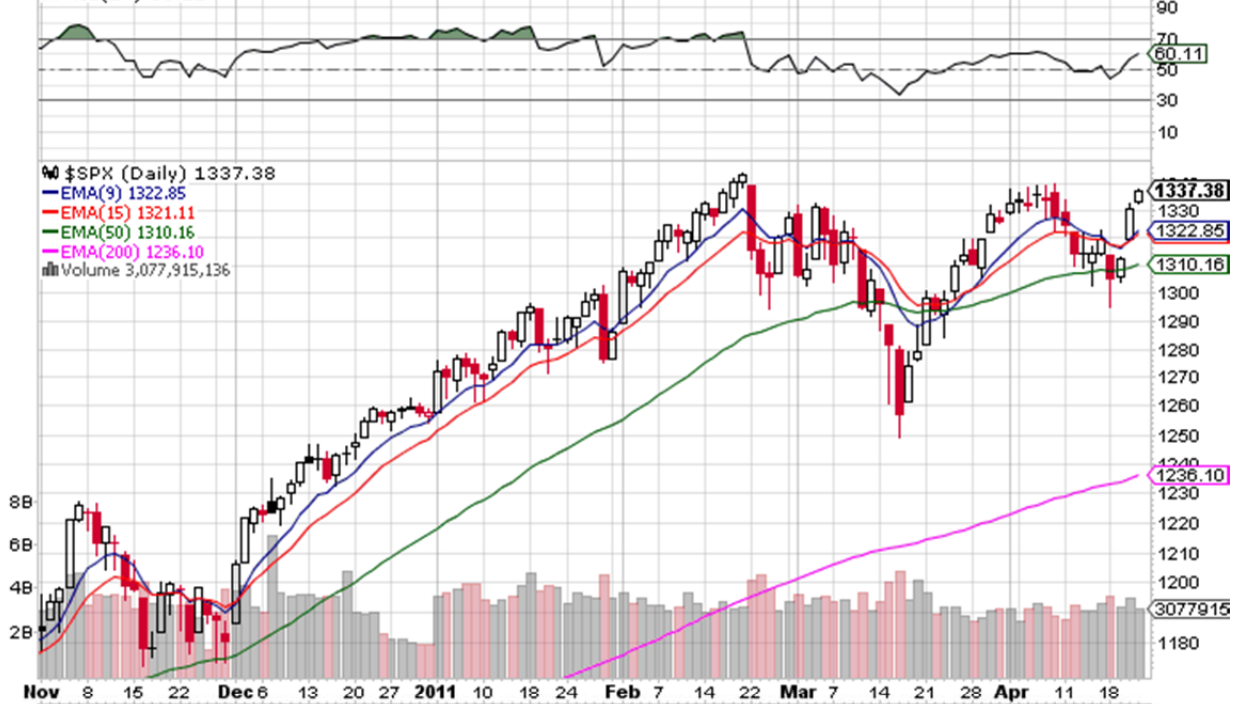
\$SPX (S&P 500 Large Cap Index) INDX

© StockCharts.com

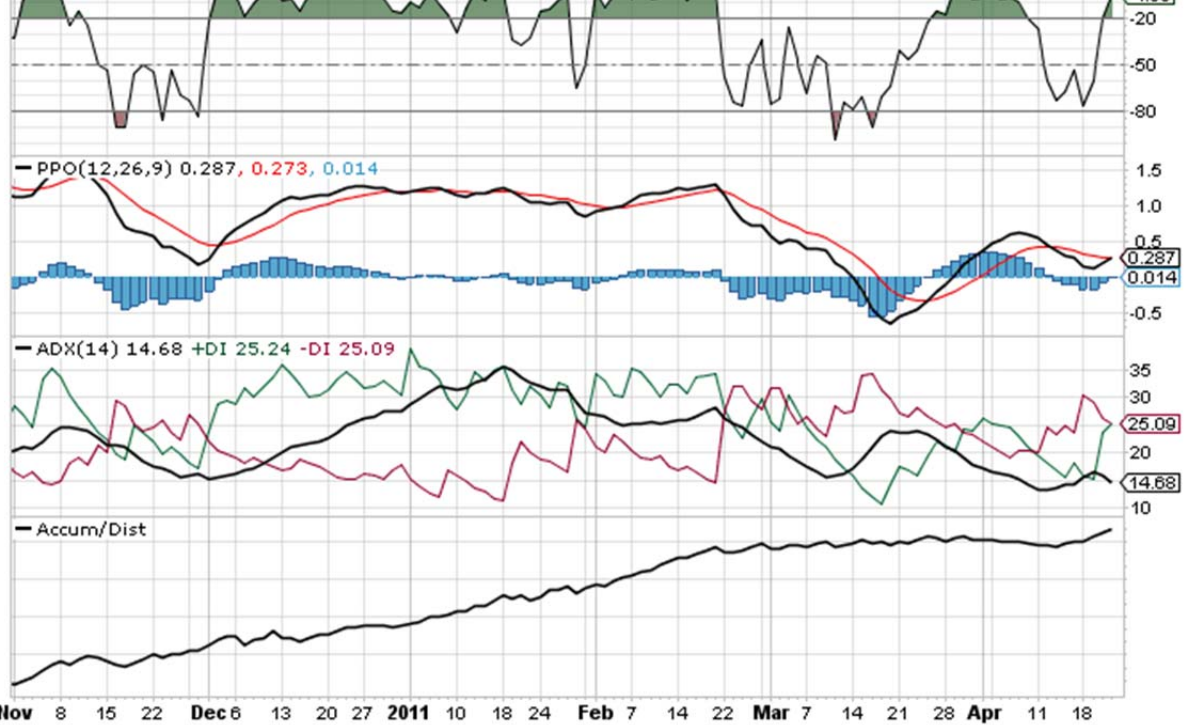
21-Apr-2011

Open 1333.23 High 1337.49 Low 1332.83 Close 1337.38 Volume 3.1B Chg +7.02 (+0.53%) ▲

▲ RSI(14) 60.11

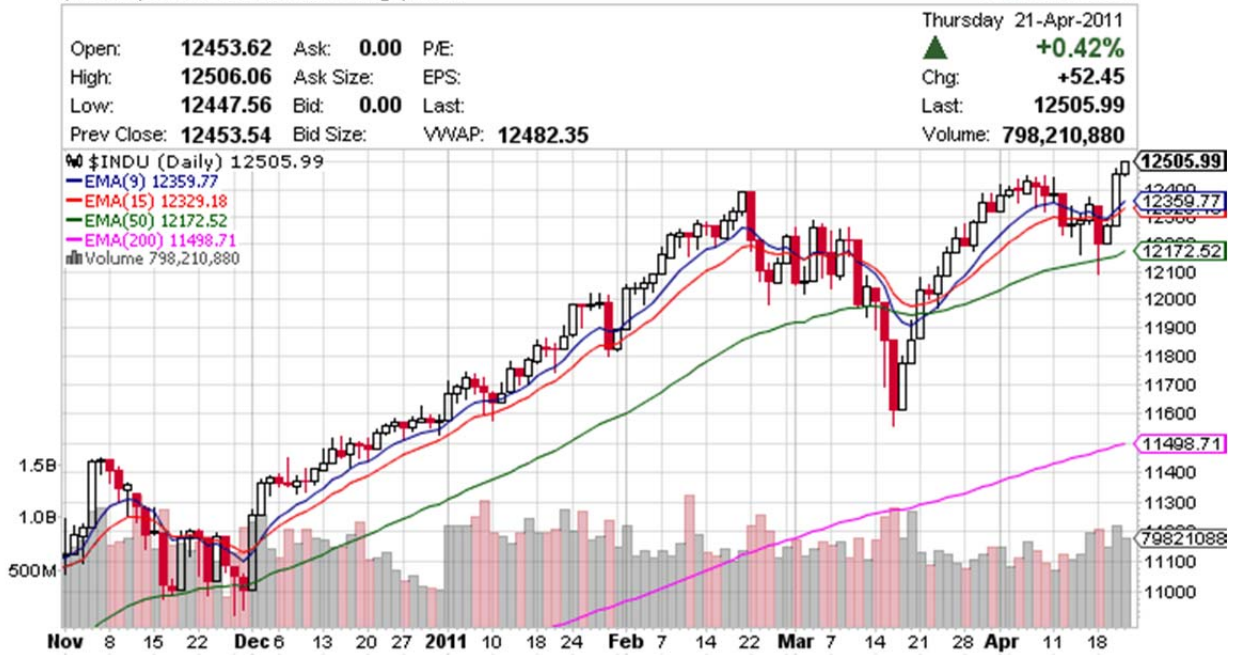


▲ Wm%R(14) -4.65



\$INDU (Dow Jones Industrial Average) INDX

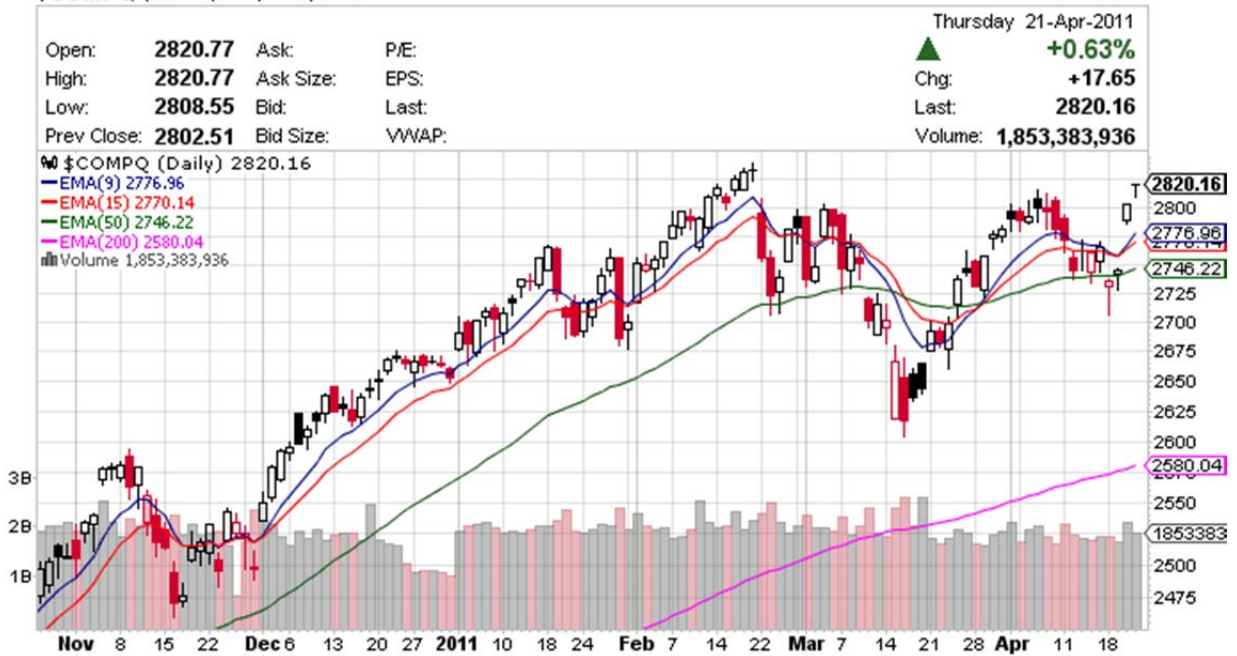
© StockCharts.com



7-4

\$COMPQ (Nasdaq Composite) INDX

© StockCharts.com



7-5

\$SPX (S&P 500 Large Cap Index) INDX

© StockCharts.com



7-6

\$INDU (Dow Jones Industrial Average) INDX

© StockCharts.com

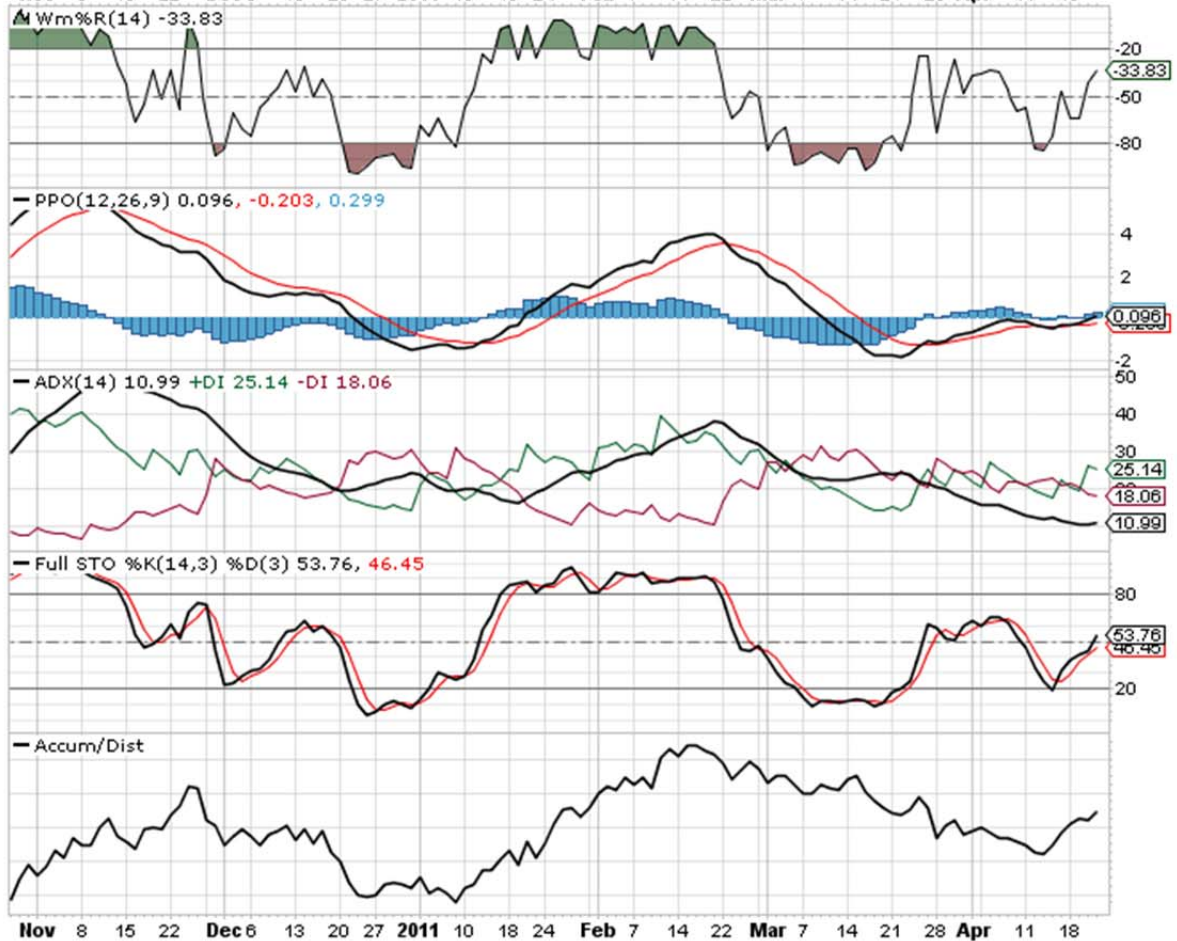


7-7

EBAY (eBay, Inc.) Nasdaq GS
21-Apr-2011

© StockCharts.com

Open 31.81 High 32.00 Low 31.63 Close 31.95 Volume 8.4M Chg +0.19 (+0.60%) ▲



BIG (Big Lots, Inc.) NYSE

© StockCharts.com

17-Dec-2010

Open 28.79 High 29.55 Low 28.63 Close 29.55 Volume 3.8M Chg +0.70 (+2.43%) ▲



BIG (Big Lots, Inc.) NYSE

© StockCharts.com

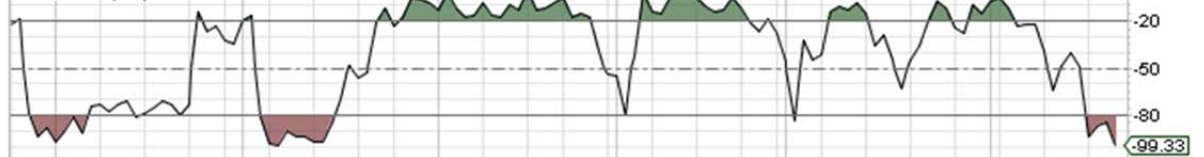
21-Apr-2011

Open 42.12 High 42.12 Low 41.47 Close 41.49 Volume 1.7M Chg -0.59 (-1.40%)

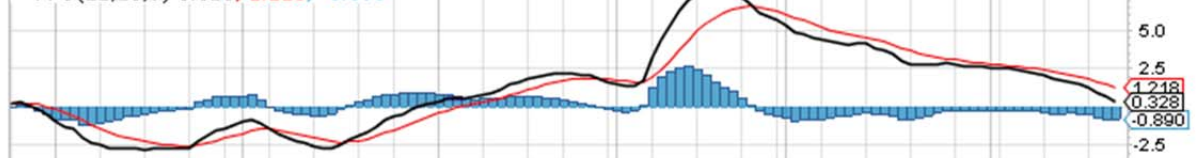
▲ RSI(14) 38.88



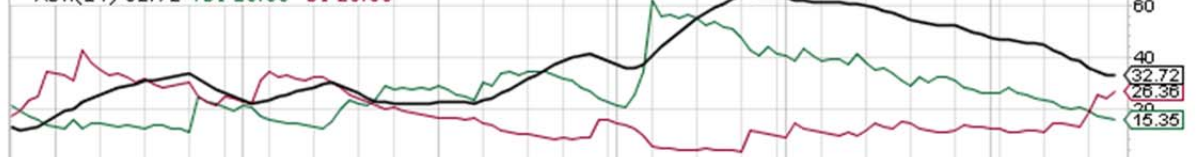
▲ Wm%R(14) -99.33



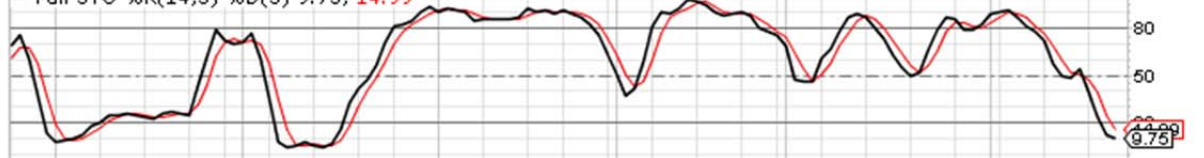
— PPO(12,26,9) 0.328, 1.218, -0.890



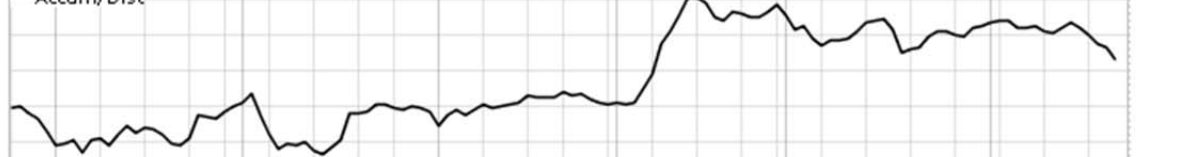
— ADX(14) 32.72 +DI 15.35 -DI 26.36



— Full STO %K(14,3) %D(3) 9.75, 14.99



— Accum/Dist



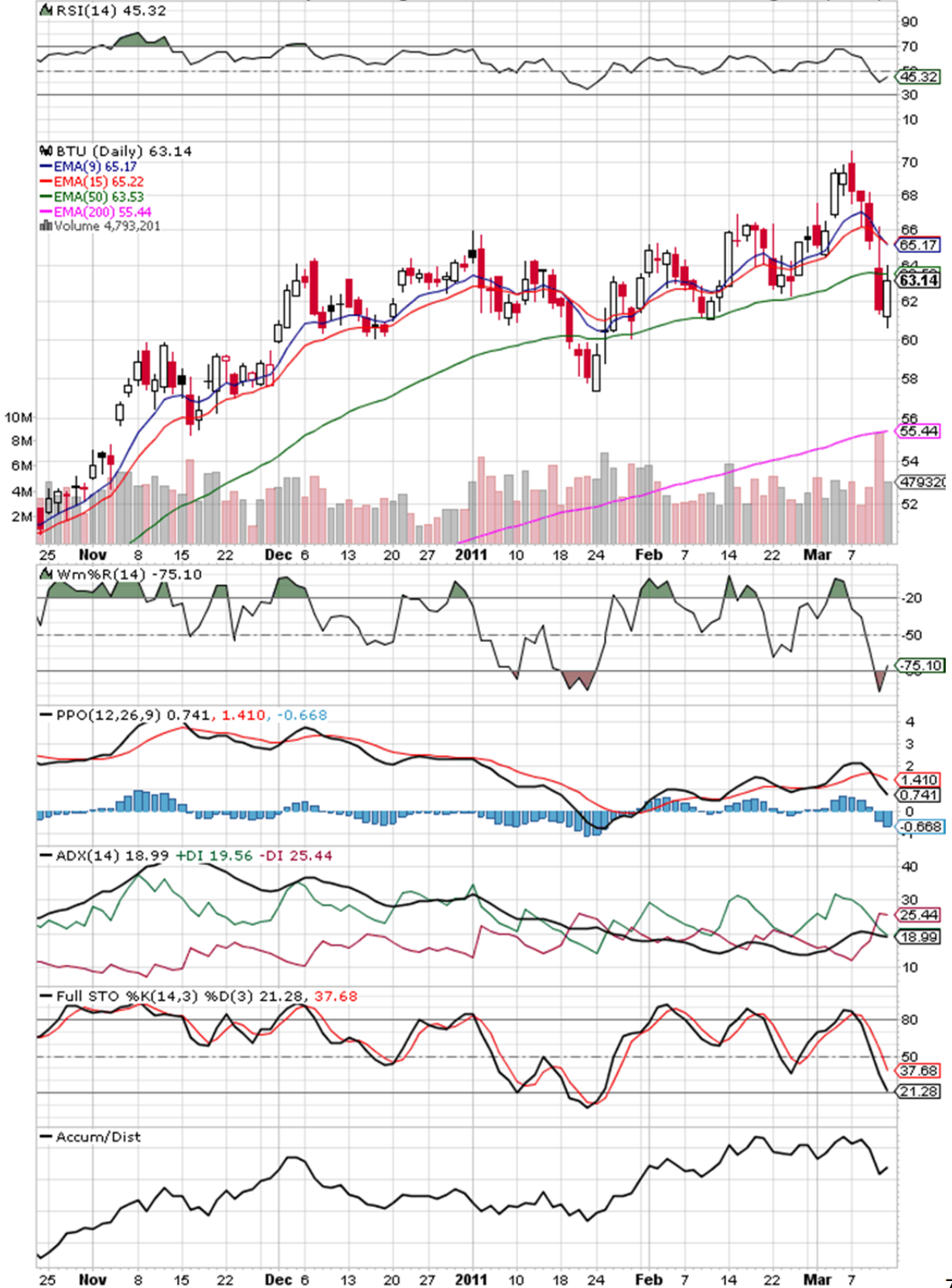
25 Nov 8 15 22 Dec 6 13 20 27 2011 10 18 24 Feb 7 14 22 Mar 7 14 21 28 Apr 11 18

BTU (Peabody Energy Corp.) NYSE

© StockCharts.com

11-Mar-2011

Open 61.20 High 63.97 Low 60.62 Close 63.14 Volume 4.8M Chg +1.55 (+2.52%) ▲

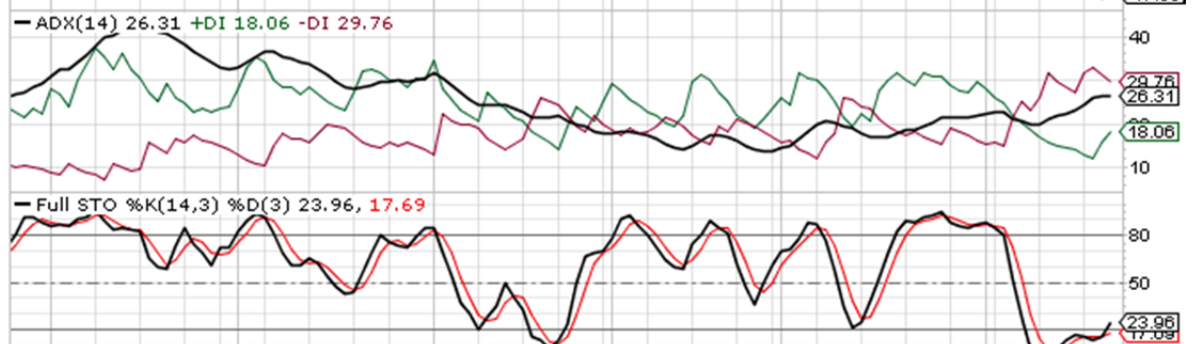
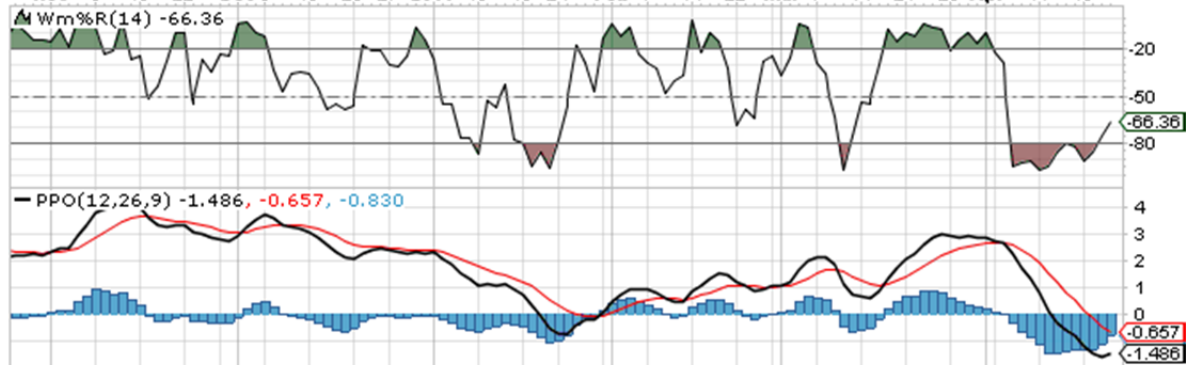
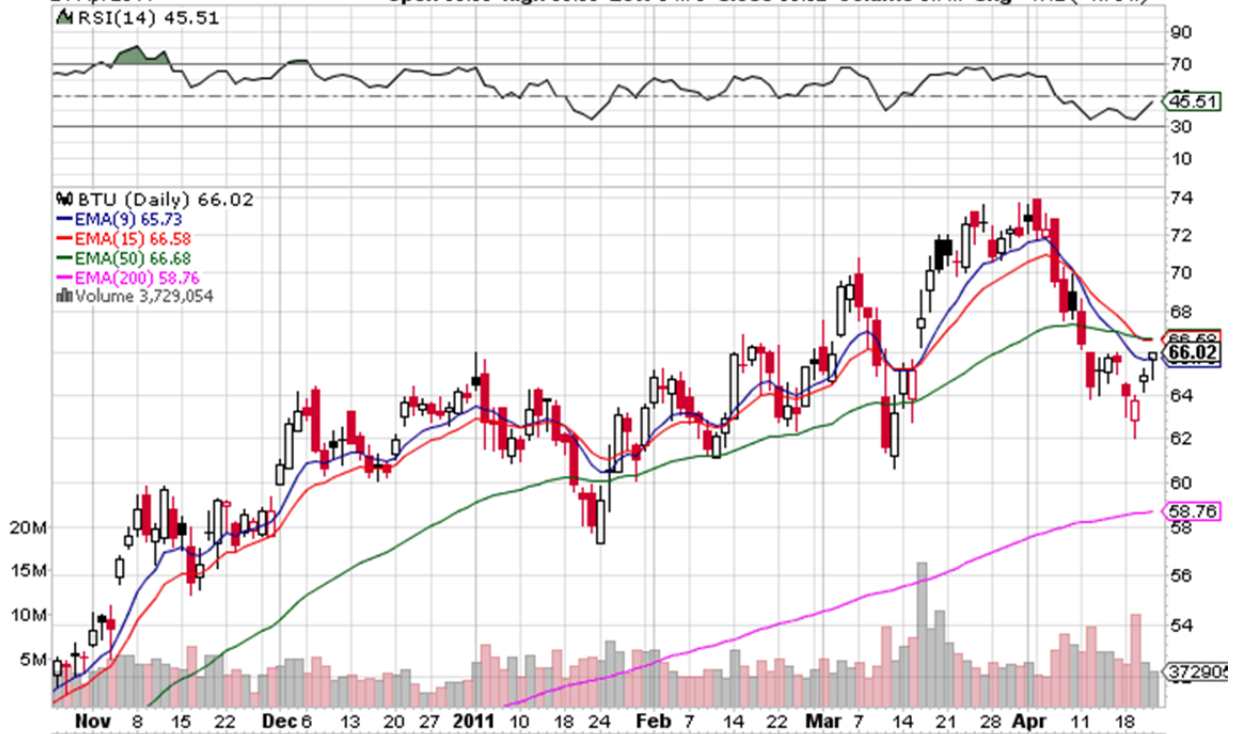


BTU (Peabody Energy Corp.) NYSE

© StockCharts.com

21-Apr-2011

Open 65.68 High 66.05 Low 64.75 Close 66.02 Volume 3.7M Chg +1.12 (+1.73%) ▲



MAR (Marriott Intl Inc New) NYSE

© StockCharts.com

20-Oct-2010

Open 34.97 High 36.33 Low 34.92 Close 35.87 Volume 4.1M Chg +1.00 (+2.85%) ▲

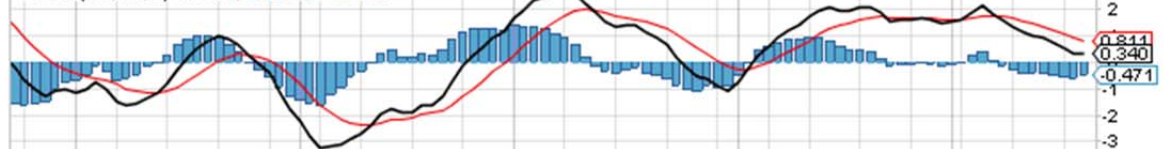
RSI(14) 52.49



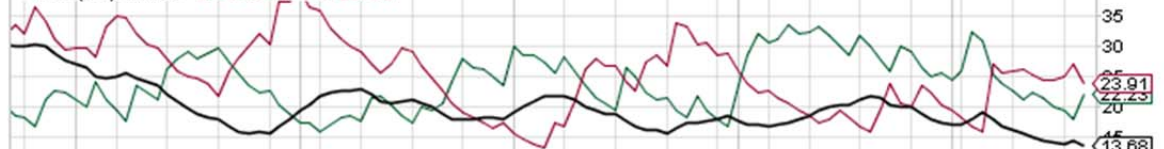
Wm%R(14) -60.45



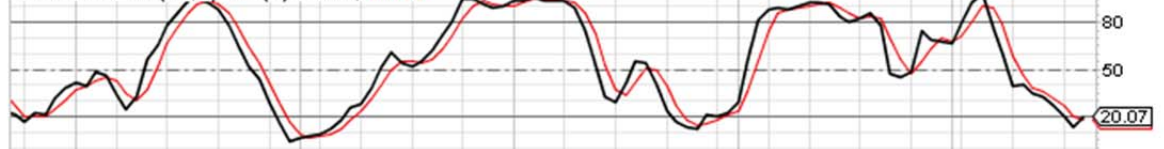
PPO(12,26,9) 0.340, 0.811, -0.471



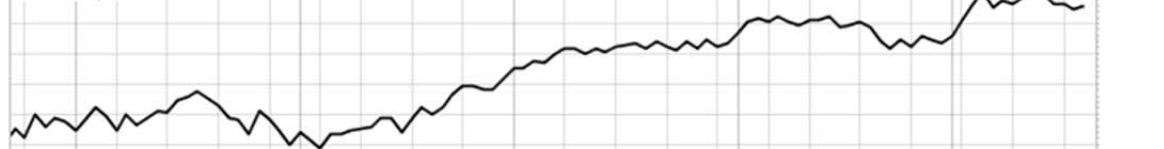
ADX(14) 13.68 +DI 22.23 -DI 23.91



Full STO %K(14,3) %D(3) 20.07, 17.60



Accum/Dist



24 Jun 7 14 21 28 Jul 6 12 19 26 Aug 9 16 23 Sep 7 13 20 27 Oct 11 18

MAR (Marriott Intl Inc New) NYSE
 21-Apr-2011

© StockCharts.com

Open 35.15 High 36.58 Low 35.13 Close 35.87 Volume 6.8M Chg +0.59 (+1.67%) ▲



BHI (Baker Hughes, Inc.) NYSE
 10-Mar-2011

© StockCharts.com

Open 67.12 High 67.87 Low 65.50 Close 66.75 Volume 6.1M Chg -1.58 (-2.31%)



BHI (Baker Hughes, Inc.) NYSE
 10-Mar-2011

© StockCharts.com

Open 67.12 High 67.87 Low 65.50 Close 66.75 Volume 6.1M Chg -1.58 (-2.31%)



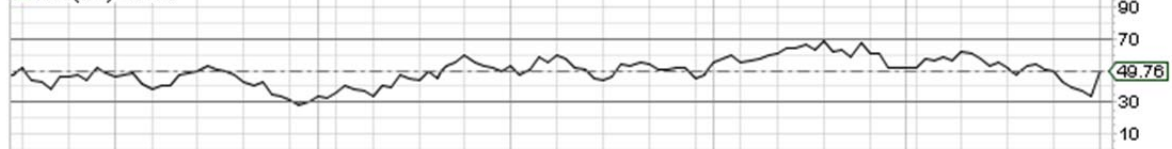
TGT (Target Corp.) NYSE

© StockCharts.com

1-Nov-2010

Open 51.90 High 53.36 Low 51.45 Close 52.99 Volume 12.0M Chg +1.53 (+2.96%) ▲

▲ RSI(14) 49.76



📊 TGT (Daily) 52.99

— EMA(9) 52.67

— EMA(15) 52.91

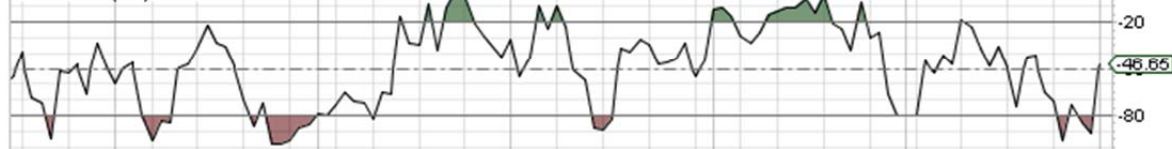
— EMA(50) 52.81

— EMA(200) 51.22

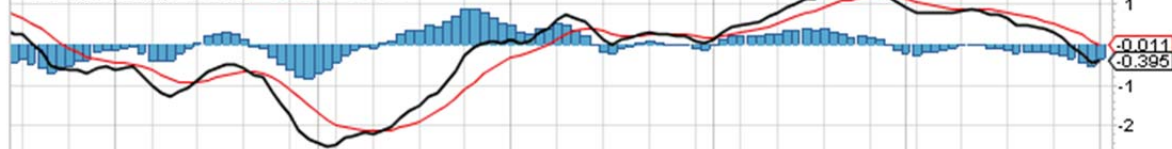
📊 Volume 11,993,809



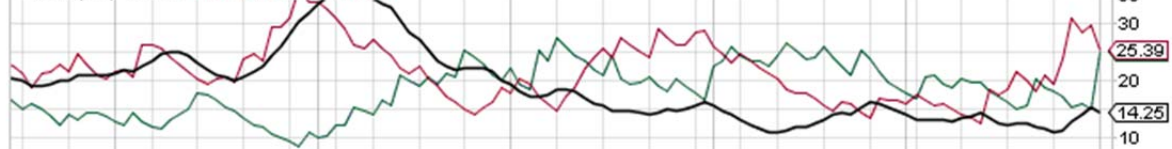
▲ Wm%R(14) -46.65



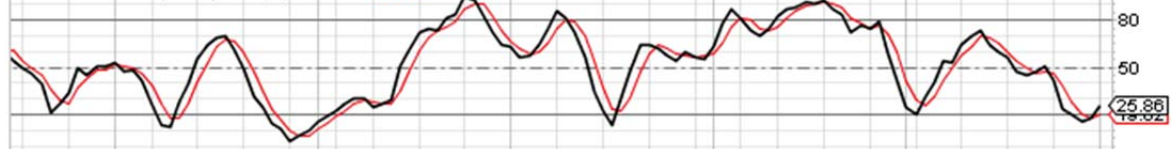
— PPO(12,26,9) -0.395, -0.011, -0.384



— ADX(14) 14.25 +DI 25.05 -DI 25.39



— Full STO %K(14,3) %D(3) 25.86, 19.62



— Accum/Dist



17 24 Jun 7 14 21 28 Jul 5 12 19 26 Aug 9 16 23 Sep 7 13 20 27 Oct 11 18 25 Nov

TGT (Target Corp.) NYSE

© StockCharts.com

21-Apr-2011

Open 50.10 High 50.15 Low 49.80 Close 49.90 Volume 4.2M Chg -0.15 (-0.30%)



NFLX (Netflix, Inc.) Nasdaq GS
10-Mar-2011

© StockCharts.com

Open 191.08 High 203.74 Low 188.89 Last 200.02 Volume 10.0M Chg +7.03 (+3.64%)▲



NFLX (Netflix, Inc.) Nasdaq GS

© StockCharts.com

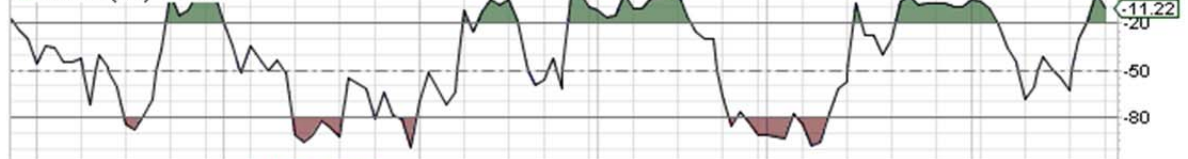
25-Apr-2011 3:31pm

Open 254.71 High 254.98 Low 248.00 Last 251.55 Volume 6.6M Chg -0.67 (-0.27%)

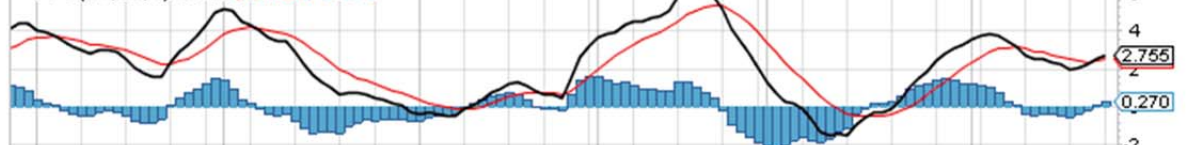
▲ RSI(14) 66.89



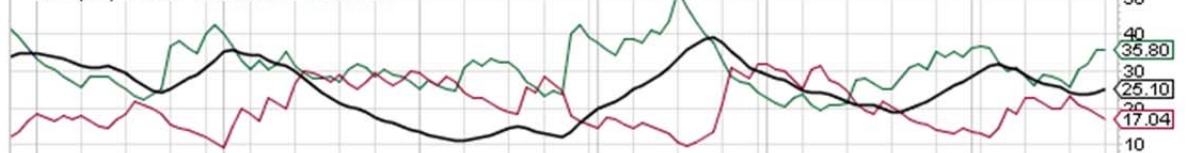
▲ Wm%R(14) -11.22



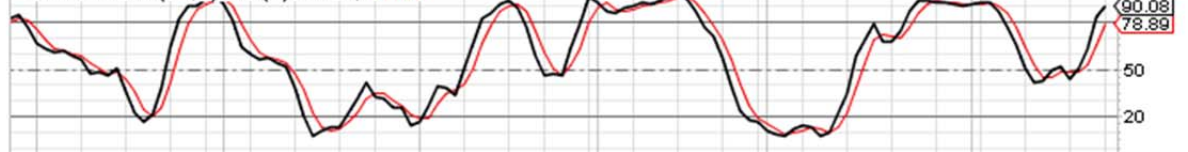
— PPO(12,26,9) 2.755, 2.485, 0.270



— ADX(14) 25.10 +DI 35.80 -DI 17.04



— Full STO %K(14,3) %D(3) 90.08, 78.89



— Accum/Dist (21 Apr)



Nov 8 15 22 Dec 6 13 20 27 2011 10 18 24 Feb 7 14 22 Mar 7 14 21 28 Apr 11 18 25

WBMD (WebMD Health Corp.) Nasdaq GS © StockCharts.com
 12-Apr-2011 Open 50.99 High 51.42 Low 50.25 Close 51.11 Volume 1.8M Chg +1.92 (+3.90%) ▲



WBMD (WebMD Health Corp.) Nasdaq GS

© StockCharts.com

25-Apr-2011

Open 55.73 High 56.73 Low 55.57 Close 56.41 Volume 650.4K Chg +1.16 (+2.10%) ▲



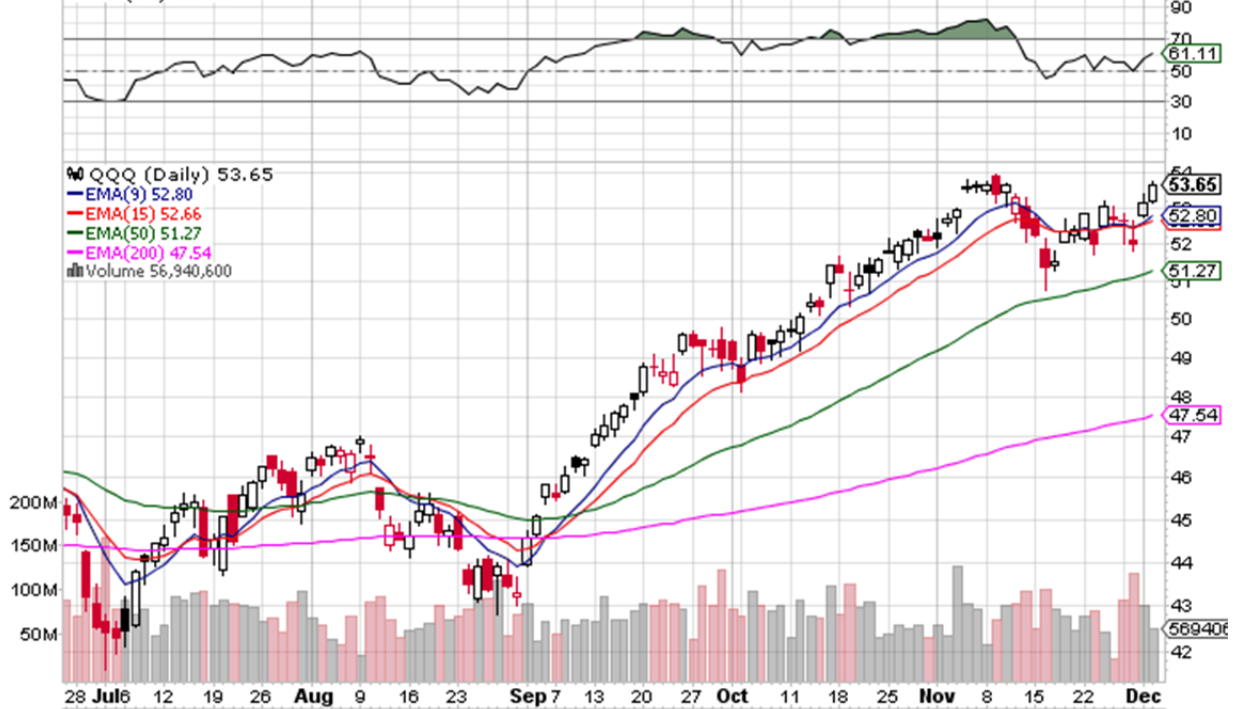
QQQ (PowerShares QQQ Trust) Nasdaq GM

© StockCharts.com

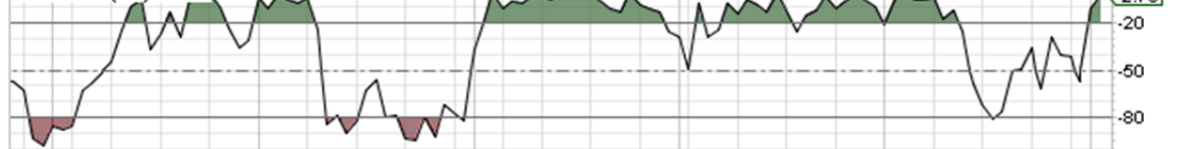
2-Dec-2010

Open 53.19 High 53.73 Low 53.14 Last 53.65 Volume 56.9M Chg +0.54 (+1.02%) ▲

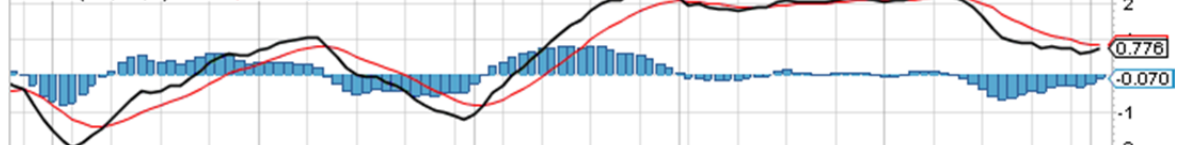
▲ RSI(14) 61.11



▲ Wm%R(14) -2.70



— PPO(12,26,9) 0.776, 0.845, -0.070



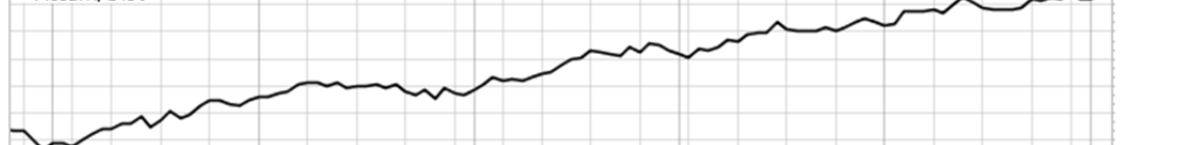
— ADX(14) 15.42 +DI 26.17 -DI 20.61



— Full STO %K(14,3) %D(3) 76.19, 64.47



— Accum/Dist



28 Jul 6 12 19 26 Aug 9 16 23 Sep 7 13 20 27 Oct 11 18 25 Nov 8 15 22 Dec

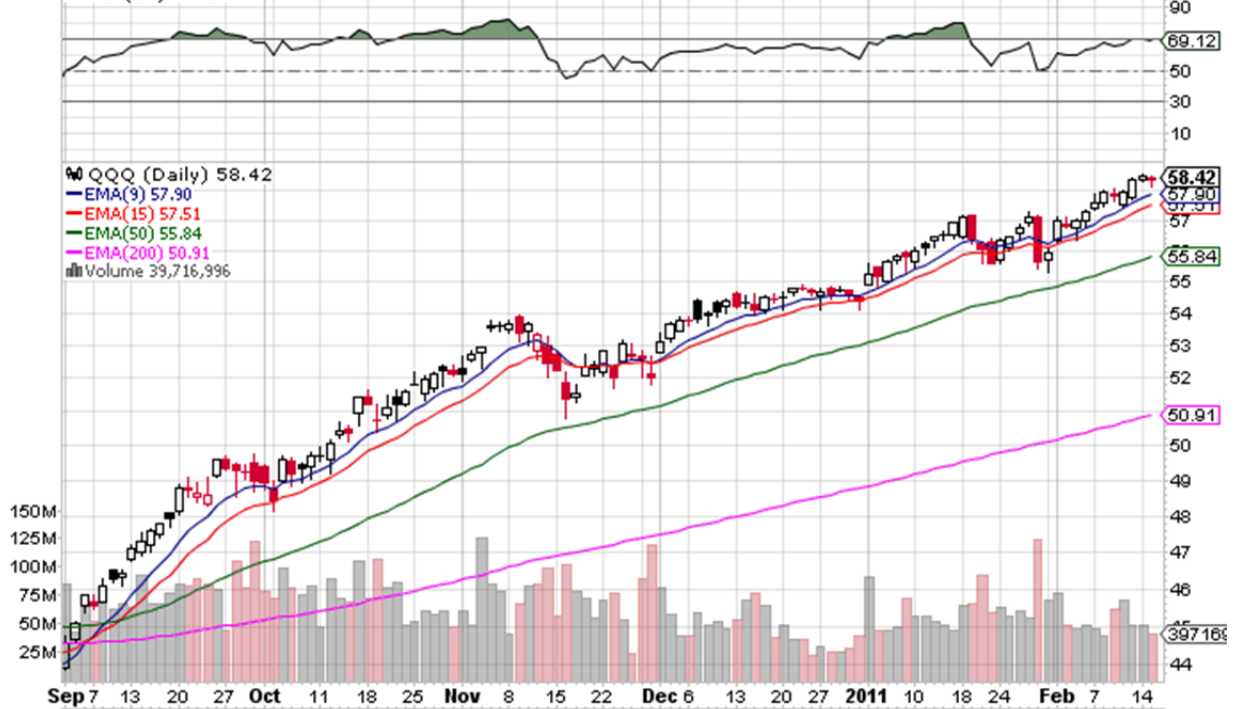
QQQ (PowerShares QQQ Trust) Nasdaq GM

© StockCharts.com

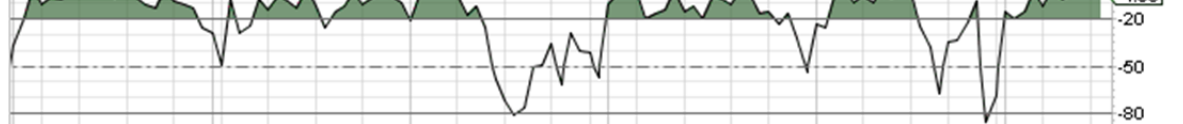
15-Feb-2011

Open 58.36 High 58.49 Low 58.15 Last 58.42 Volume 39.7M Chg -0.08 (-0.14%)

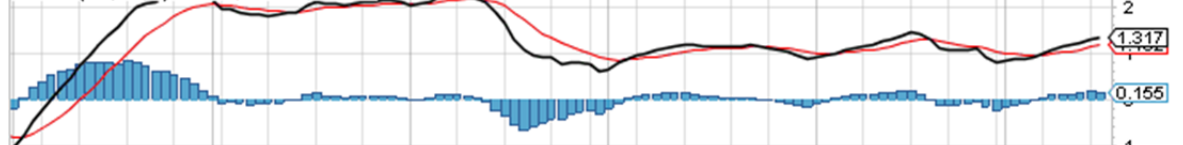
▲ RSI(14) 69.12



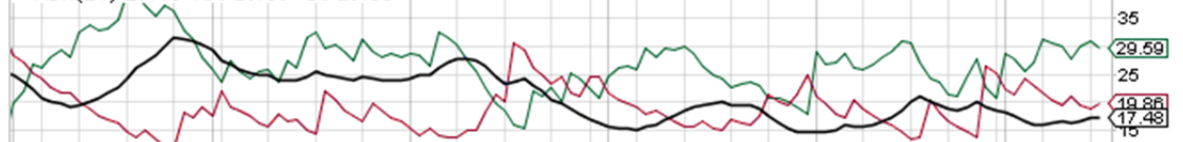
▲ Wm%R(14) -4.89



— PPO(12,26,9) 1.317, 1.162, 0.155



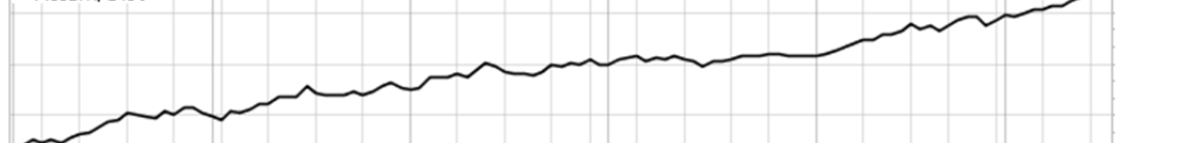
— ADX(14) 17.48 +DI 29.59 -DI 19.86



— Full STO %K(14,3) %D(3) 97.12, 96.90



— Accum/Dist



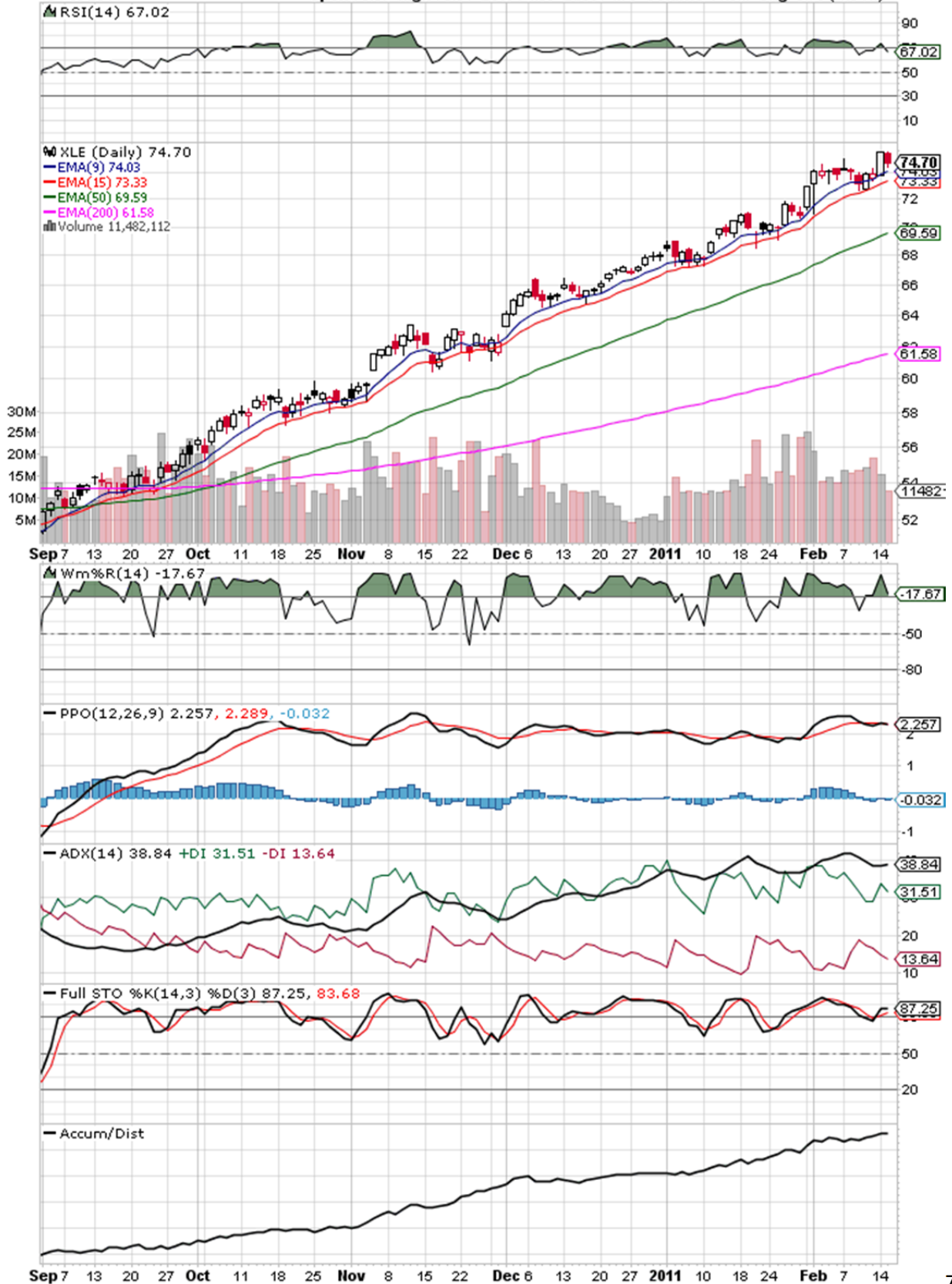
Sep 7 13 20 27 Oct 11 18 25 Nov 8 15 22 Dec 6 13 20 27 2011 10 18 24 Feb 7 14

XLE (Energy Select Sector SPDR) NYSE

© StockCharts.com

15-Feb-2011

Open 75.37 High 75.51 Low 74.38 Last 74.70 Volume 11.5M Chg -0.79 (-1.04%)

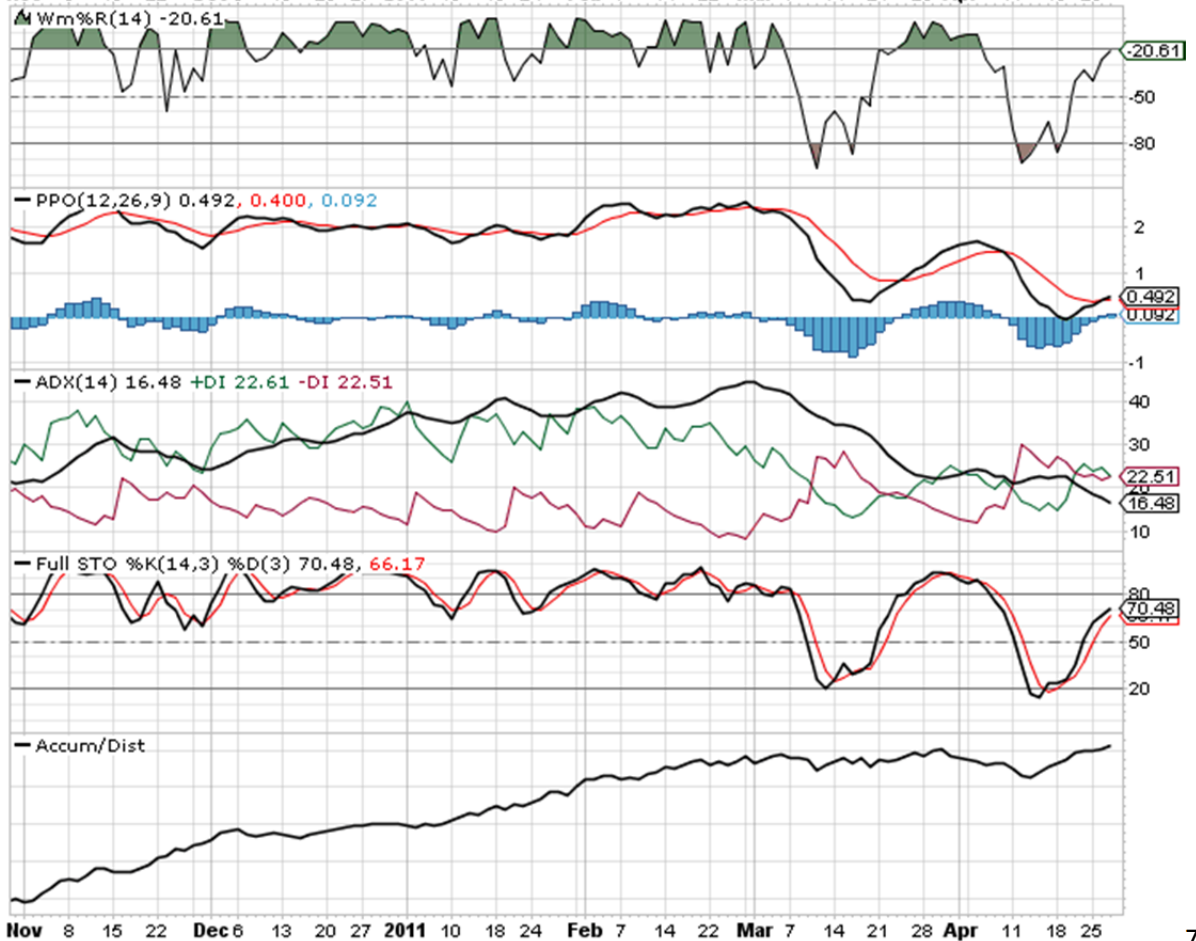
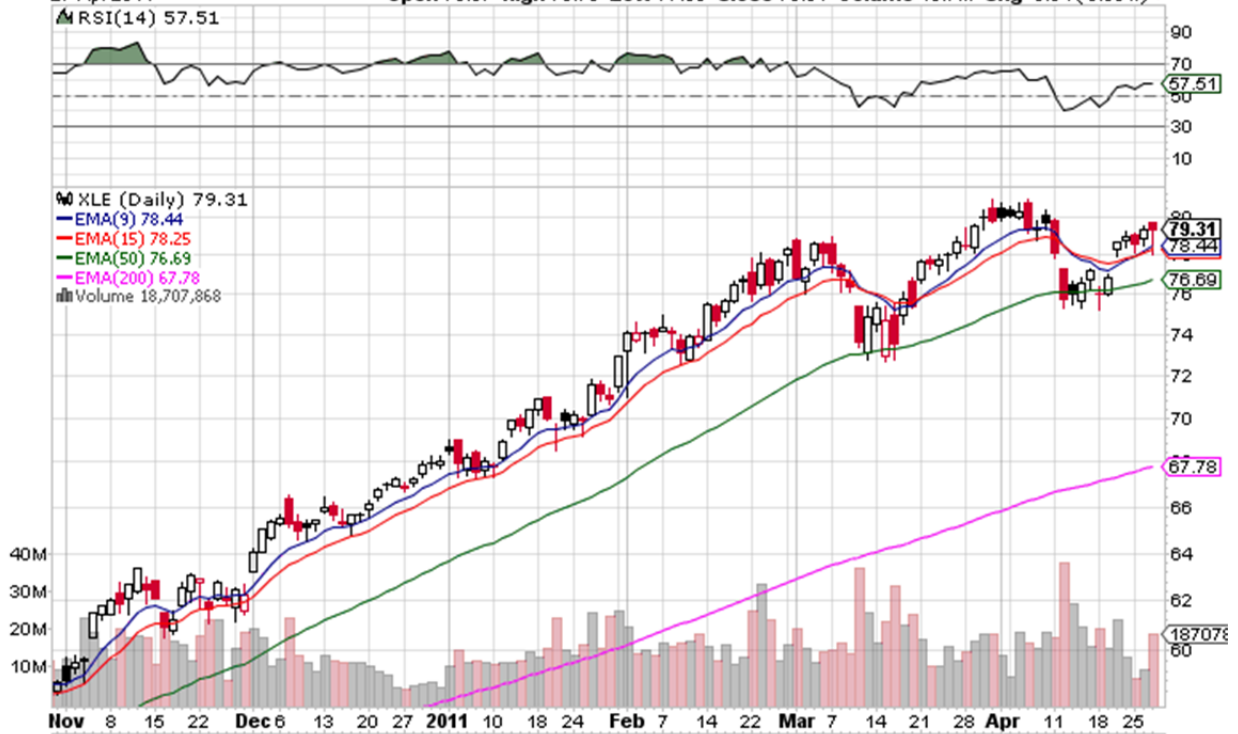


XLE (Energy Select Sector SPDR) NYSE

© StockCharts.com

27-Apr-2011

Open 79.67 High 79.70 Low 77.98 Close 79.31 Volume 18.7M Chg -0.04 (-0.05%)

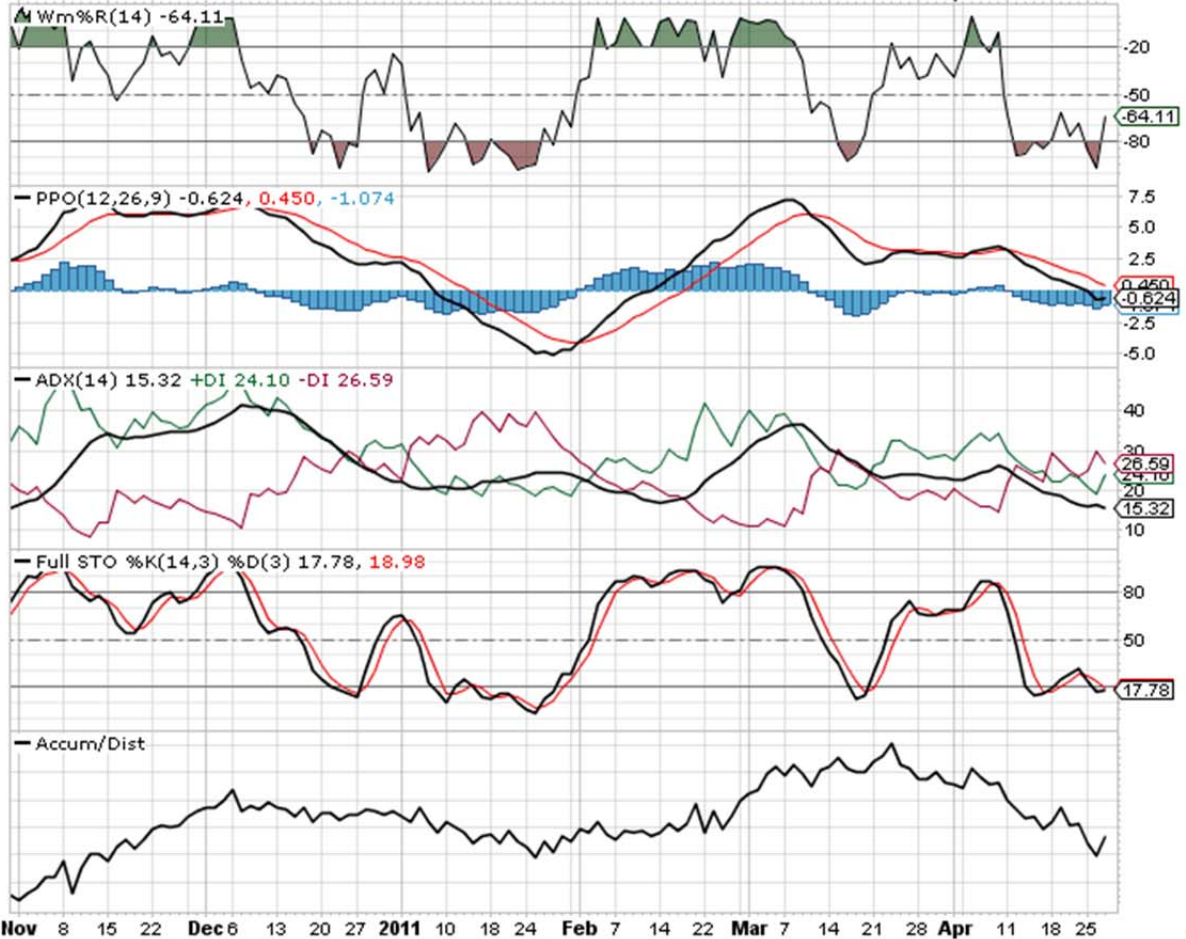
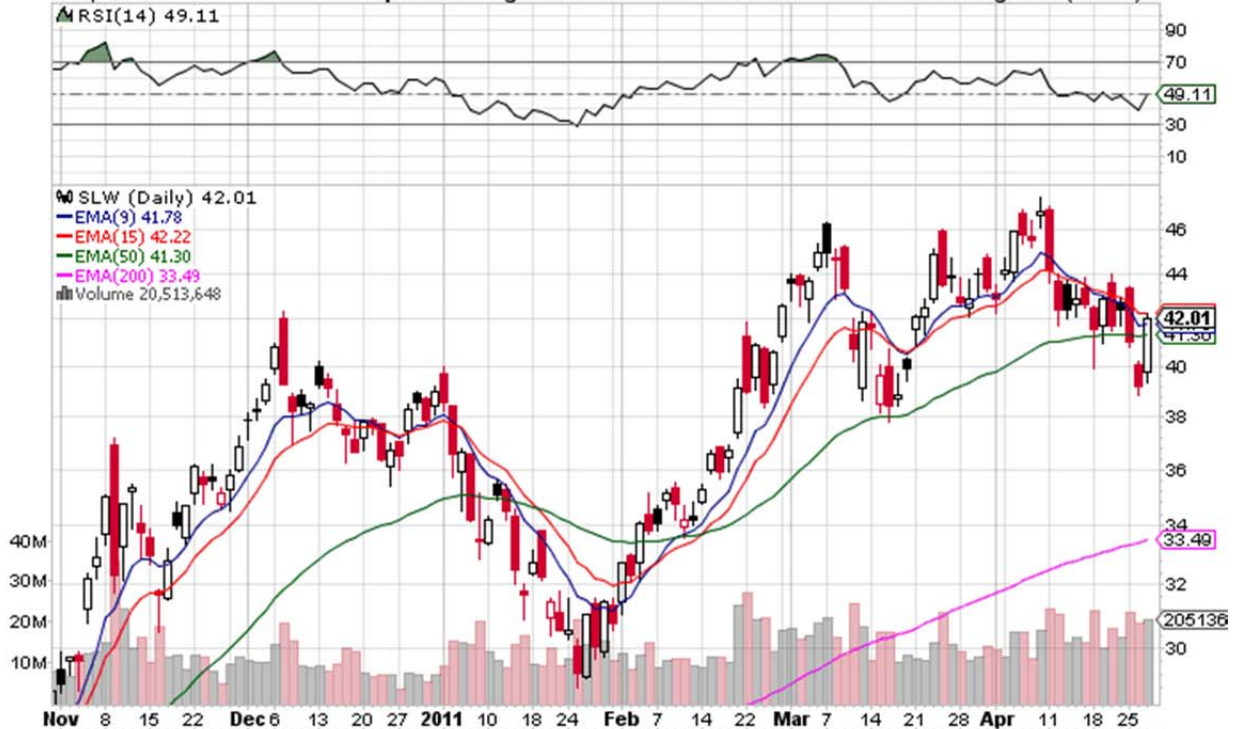


SLW (Silver Wheaton Corporation) NYSE

© StockCharts.com

27-Apr-2011

Open 39.77 High 42.21 Low 39.33 Close 42.01 Volume 20.5M Chg +2.84 (+7.25%)▲



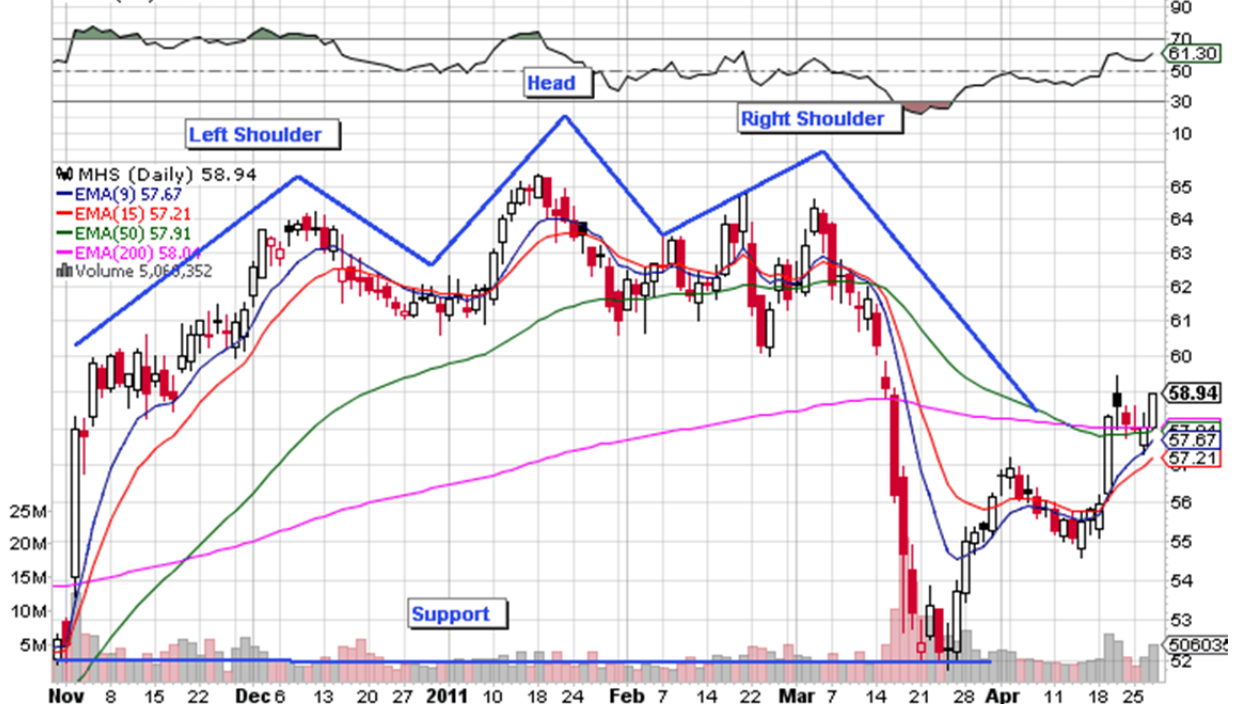
MHS (Medco Health Solutions Inc.) NYSE

© StockCharts.com

27-Apr-2011

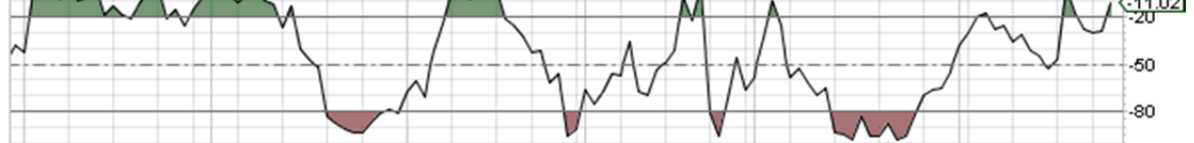
Open 58.04 High 58.97 Low 57.99 Close 58.94 Volume 5.1M Chg +0.90 (+1.55%) ▲

▲ RSI(14) 61.30

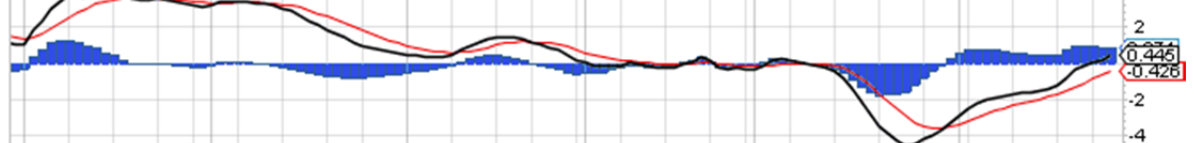


Nov 8 15 22 Dec 6 13 20 27 2011 10 18 24 Feb 7 14 22 Mar 7 14 21 28 Apr 11 18 25

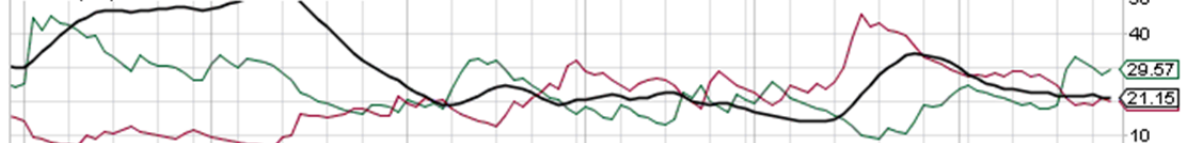
▲ Wm%R(14) -11.02



— PPO(12,26,9) 0.445, -0.426, 0.871



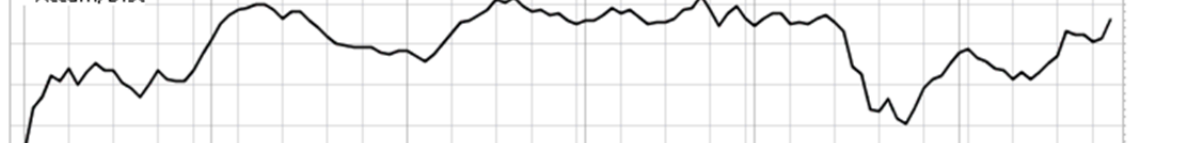
— ADX(14) 21.15 +DI 29.57 -DI 19.94



— Full STO %K(14,3) %D(3) 76.39, 74.04



— Accum/Dist

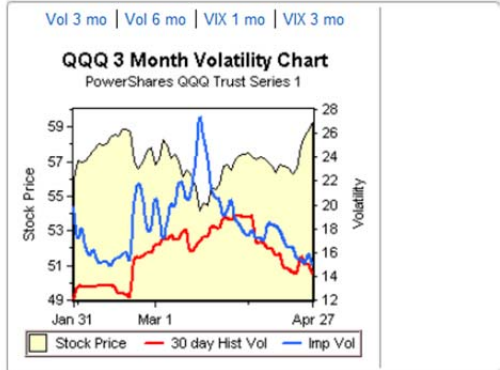
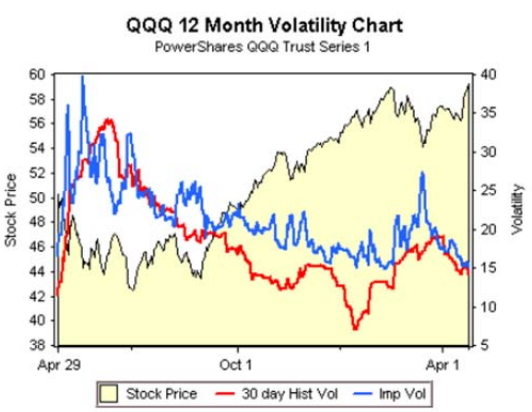


Nov 8 15 22 Dec 6 13 20 27 2011 10 18 24 Feb 7 14 22 Mar 7 14 21 28 Apr 11 18 25

Enter symbol [Find Symbol](#) [trade](#) | [More](#)

Underlying Quote				Historical Quotes Time & Sales Chart Chain Pricer News Xspreads					
Symbol	Last	Change	Bid	Ask	High	Low	Volume	Hist. Volatility	
QQQ	59.08	-0.05	59.07	59.1	0	0	0	11.78	

Basic Charts | Streaming Charts | **Volatility View**



The Chart above compares historic stock volatility and Implied Volatility with the actual movement of the stock. When the implied volatility is high, options tend to sell at a premium, when low, options tend to sell at a discount. In an effort to trade options successfully, it is important to understand their relative price history.

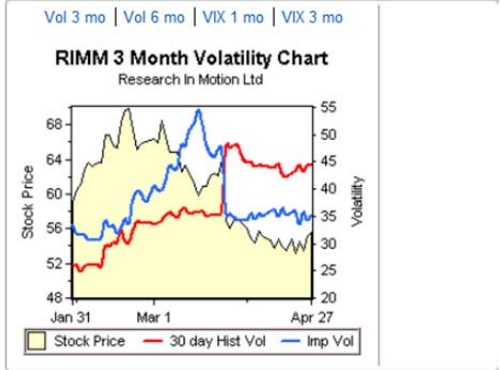
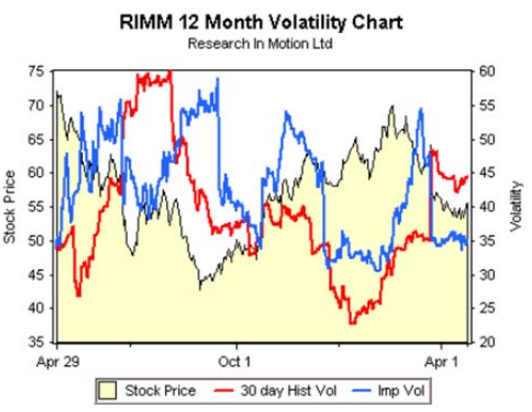
SPY	<input type="button" value="Go"/> Option	SPY 136.43	+0.32	136.55 (0)	136.55 (0)	0	3:52:29 PM ET
		PSE LAST	CHANGE	BID	ASK	VOL	TIME

10-1

Enter symbol [Find Symbol](#) [trade](#) | [More](#)

Underlying Quote				Historical Quotes Time & Sales Chart Chain Pricer News Xspreads					
Symbol	Last	Change	Bid	Ask	High	Low	Volume	Hist. Volatility	
RIMM	48.65	-7.94	48.65	48.67	0	0	0	61.62	

Basic Charts | Streaming Charts | **Volatility View**



The Chart above compares historic stock volatility and Implied Volatility with the actual movement of the stock. When the implied volatility is high, options tend to sell at a premium, when low, options tend to sell at a discount. In an effort to trade options successfully, it is important to understand their relative price history.

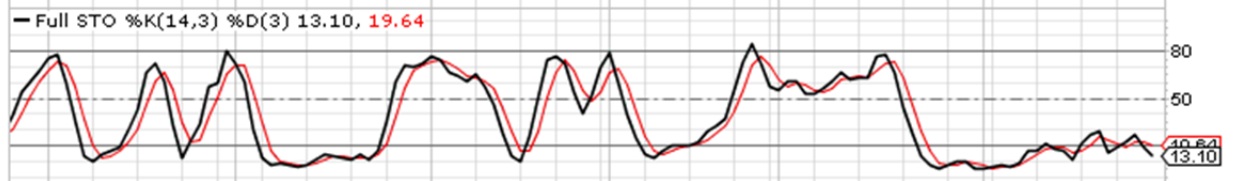
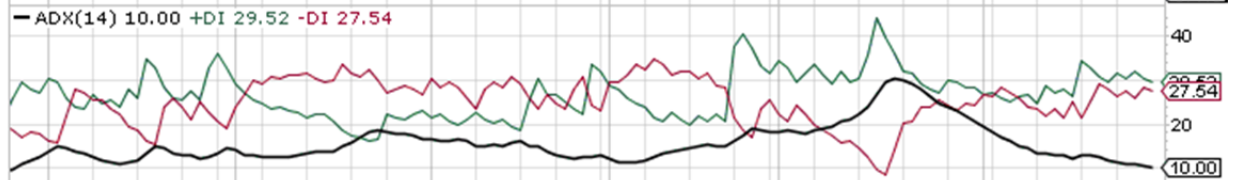
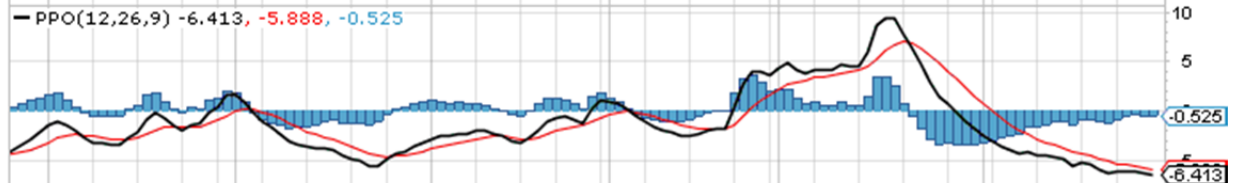
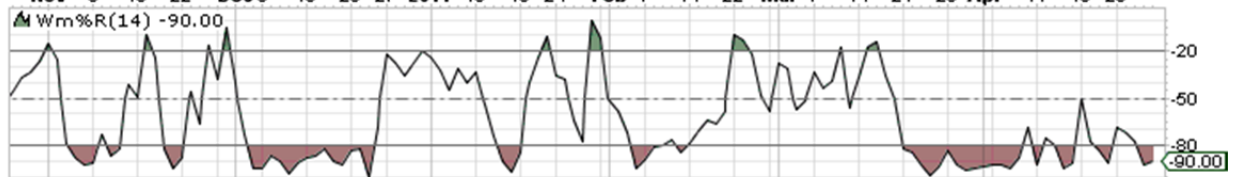
10-2

\$VIX (Volatility Index - New Methodology) INDX

© StockCharts.com

29-Apr-2011

Open 14.56 High 14.99 Low 14.49 Close 14.75 Chg +0.13 (+0.89%) ▲



Nov 8 15 22 Dec 6 13 20 27 2011 10 18 24 Feb 7 14 22 Mar 7 14 21 28 Apr 11 18 25

\$SPX (S&P 500 Large Cap Index) INDX

© StockCharts.com

29-Apr-2011

Open 1360.14 High 1364.56 Low 1358.69 Close 1363.61 Volume 3.6B Chg +3.13 (+0.23%) ▲

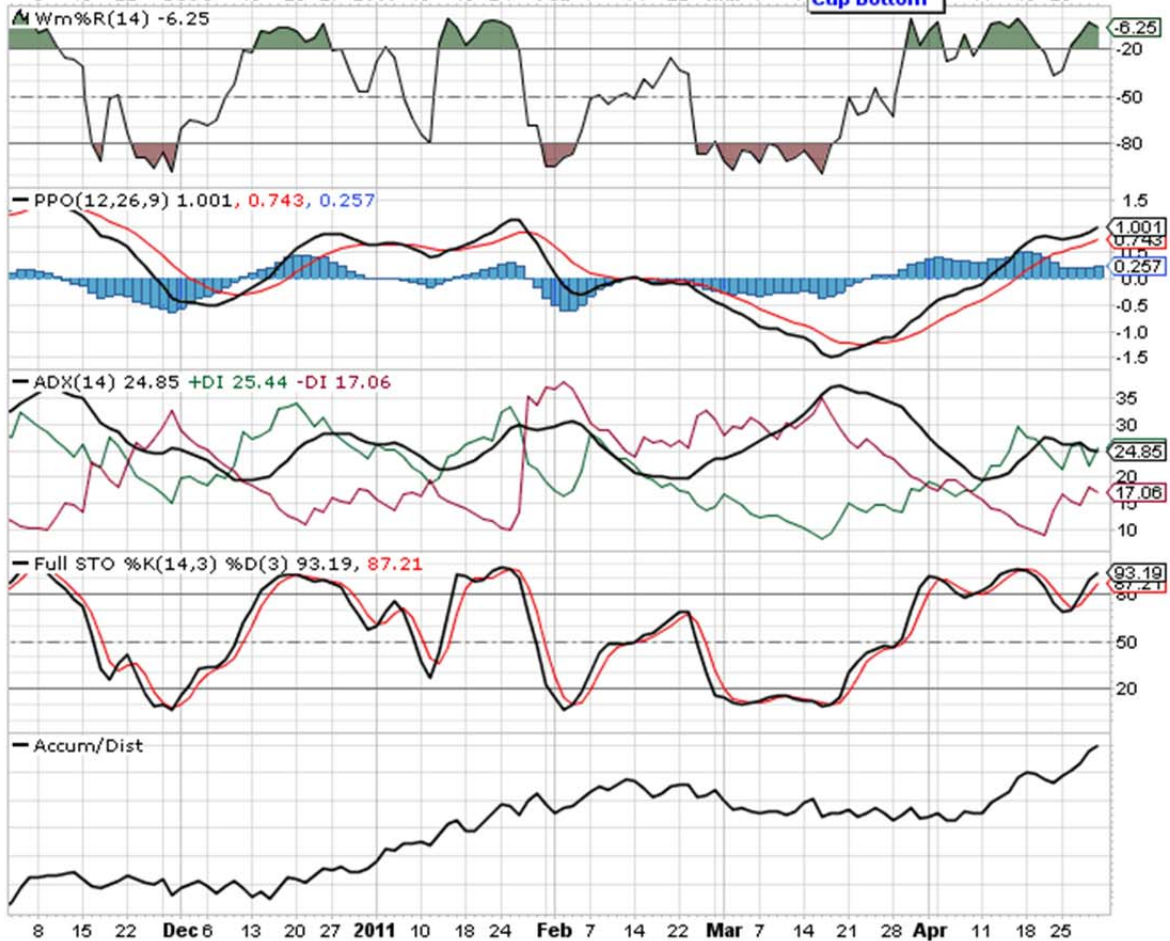


PG (Procter & Gamble Co.) NYSE

© StockCharts.com

29-Apr-2011

Open 64.58 High 65.10 Low 64.41 Close 64.90 Volume 13.4M Chg +0.40 (+0.62%) ▲



MRK (Merck & Co., Inc.) NYSE

© StockCharts.com

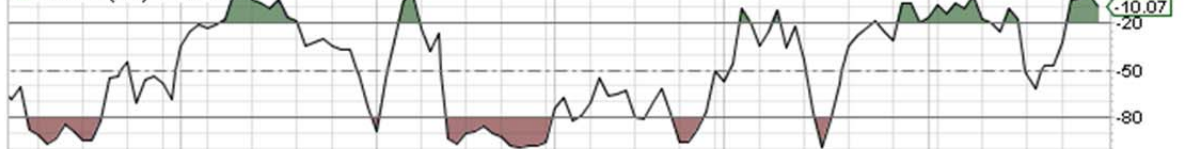
29-Apr-2011

Open 35.98 High 36.25 Low 35.63 Close 35.95 Volume 18.9M Chg +0.18 (+0.50%) ▲

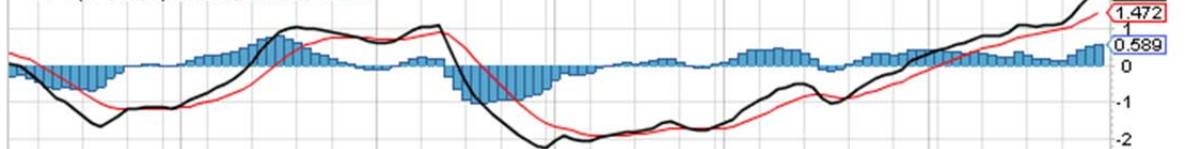
▲ RSI(14) 76.31



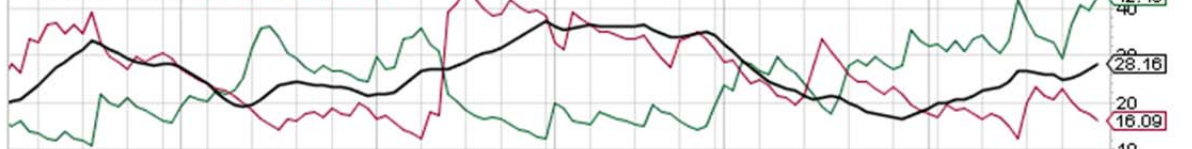
▲ Wm%R(14) -10.07



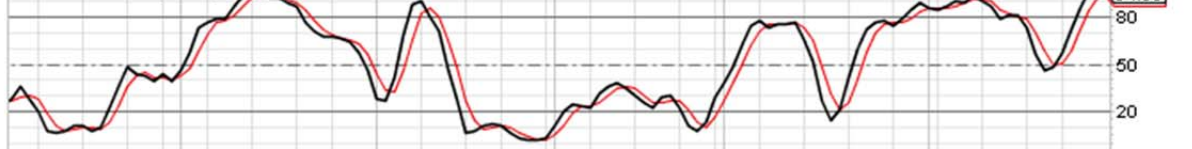
— PPO(12,26,9) 2.061, 1.472, 0.589



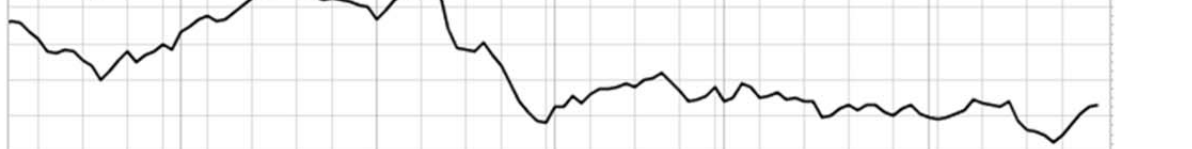
— ADX(14) 28.16 +DI 42.40 -DI 16.09



— Full STO %K(14,3) %D(3) 94.88, 92.56



— Accum/Dist



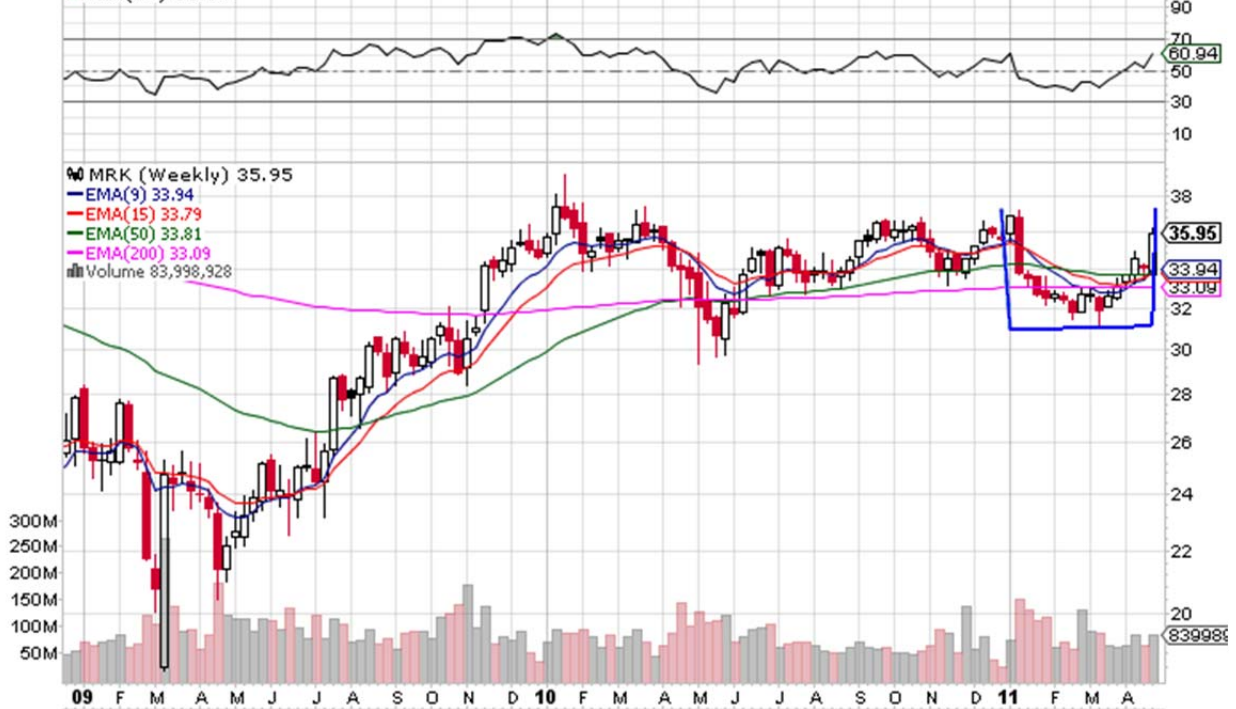
MRK (Merck & Co., Inc.) NYSE

© StockCharts.com

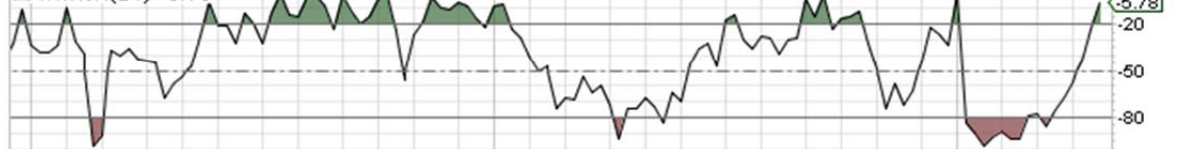
29-Apr-2011

Open 33.70 High 36.25 Low 33.63 Close 35.95 Volume 84.0M Chg +1.91 (+5.61%) ▲

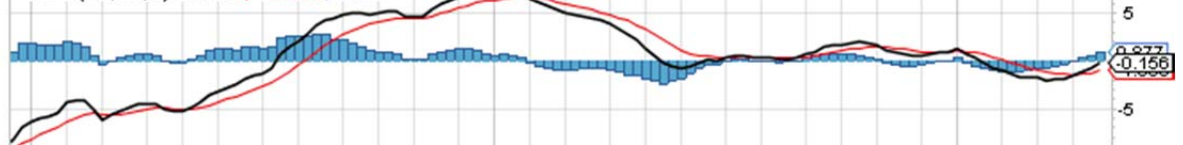
▲ RSI(14) 60.94



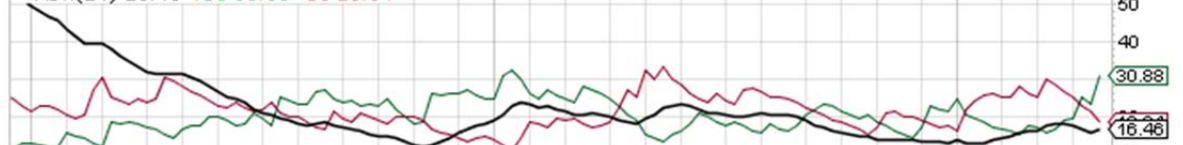
▲ Wm%R(14) -5.78



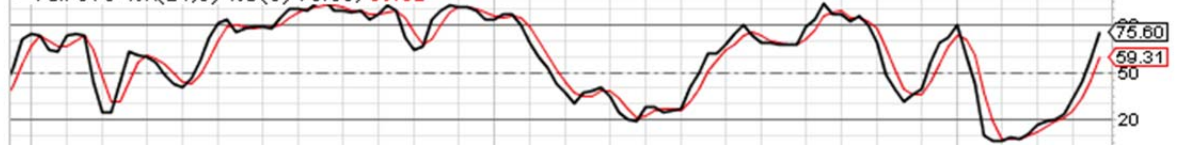
— PPO(12,26,9) -0.156, -1.033, 0.877



— ADX(14) 16.46 +DI 30.88 -DI 18.34



— Full STO %K(14,3) %D(3) 75.60, 59.31



— Accum/Dist

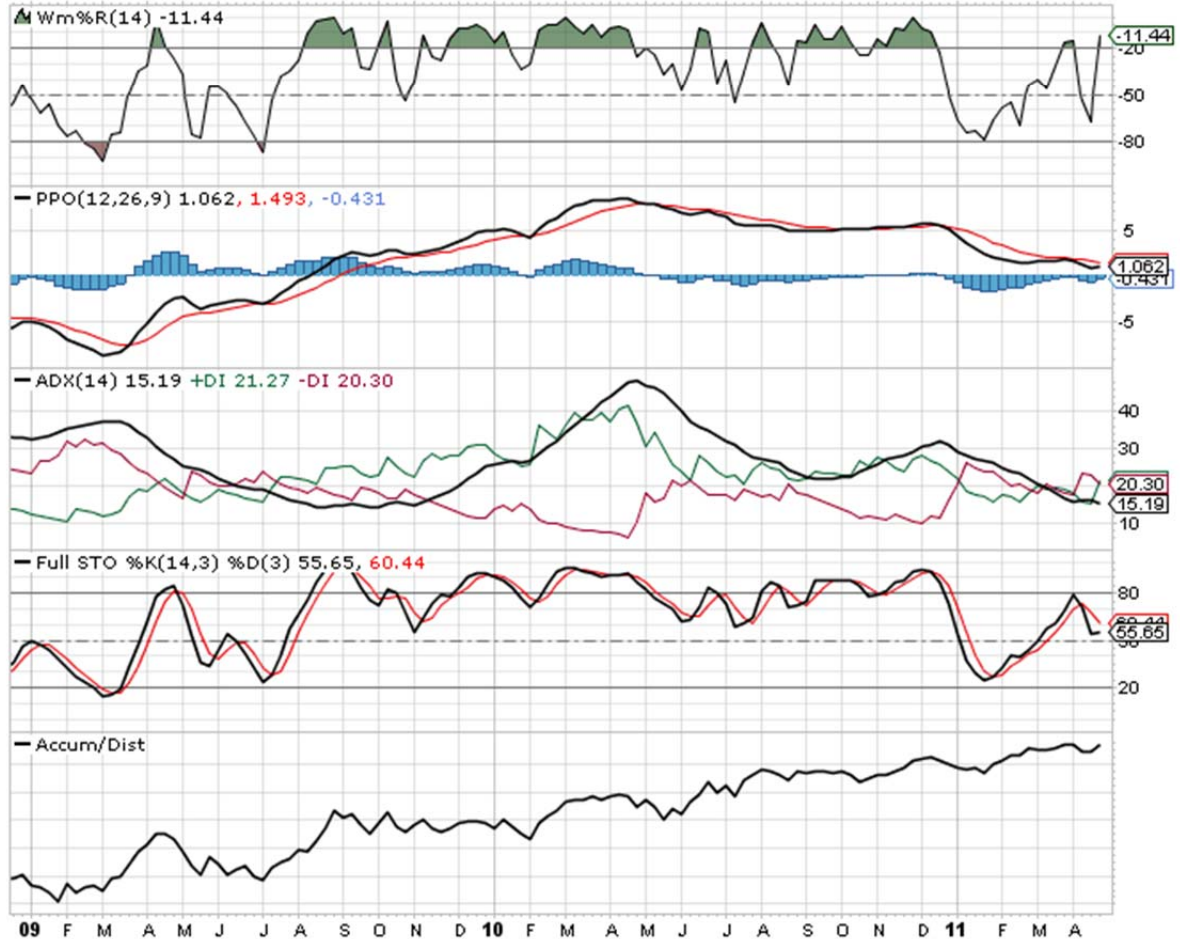
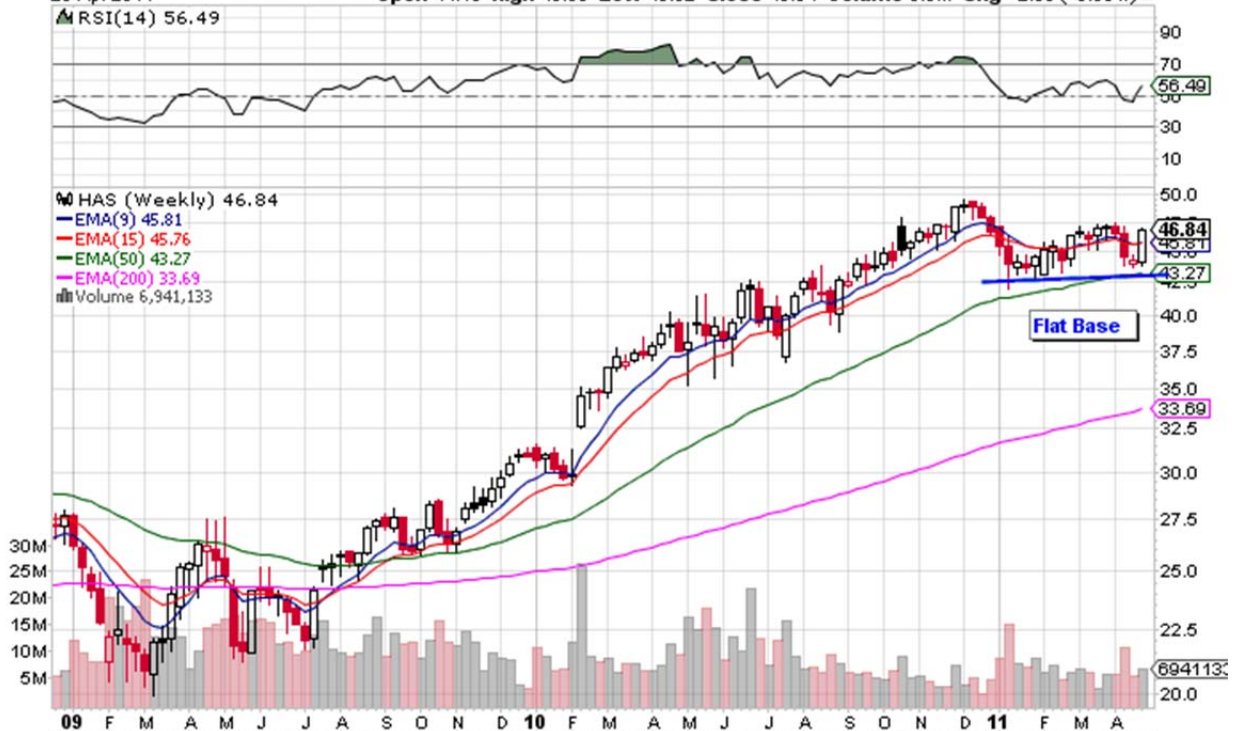


09 F M A M J J A S O N D 10 F M A M J J A S O N D 11 F M A

HAS (Hasbro, Inc.) Nasdaq GS
29-Apr-2011

© StockCharts.com

Open 44.13 High 46.93 Low 43.82 Close 46.84 Volume 6.9M Chg +2.58 (+5.83%) ▲



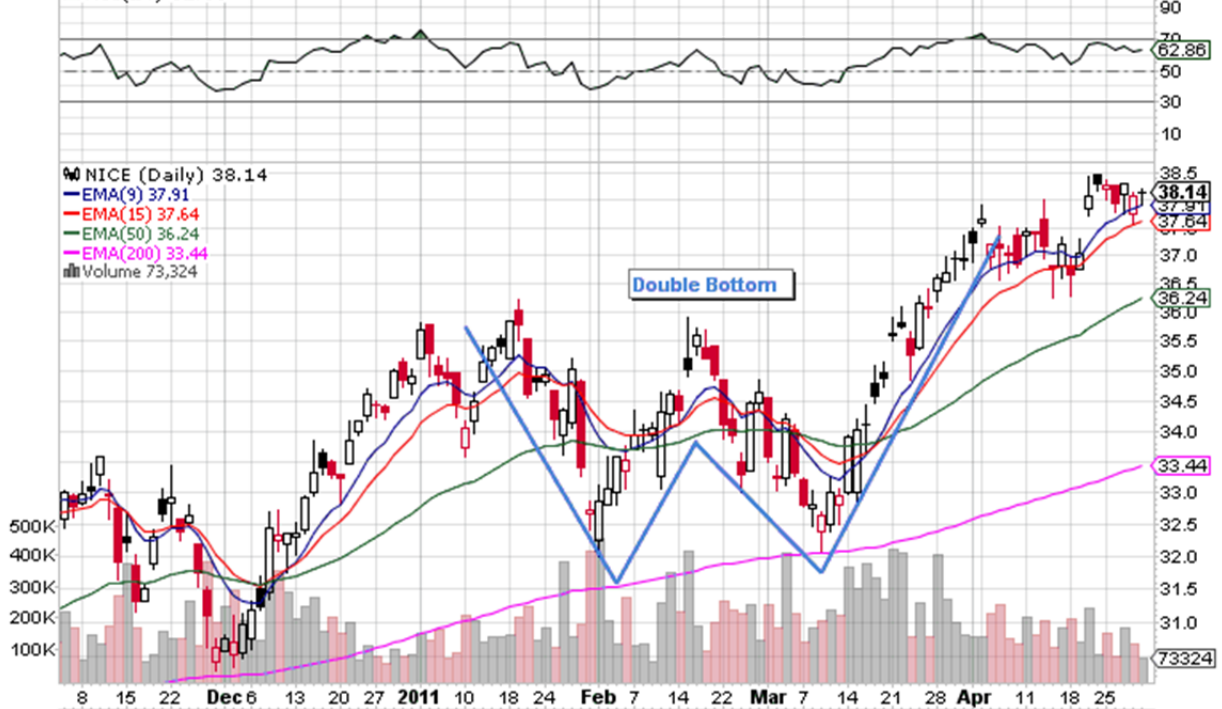
NICE (NICE-Systems Ltd.) Nasdaq GS

© StockCharts.com

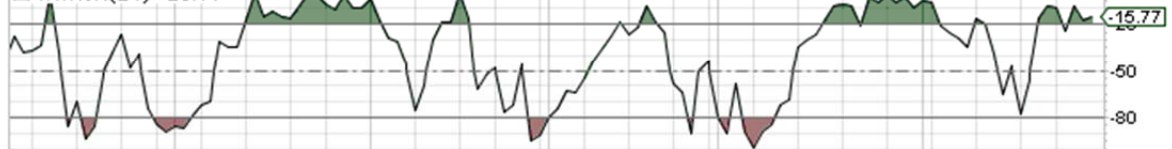
29-Apr-2011

Open 38.15 High 38.21 Low 37.92 Close 38.14 Volume 73.3K Chg +0.05 (+0.13%) ▲

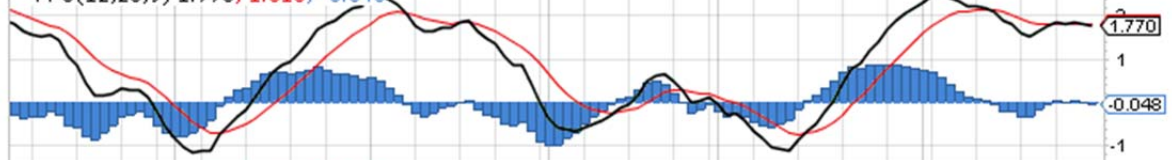
▲ RSI(14) 62.86



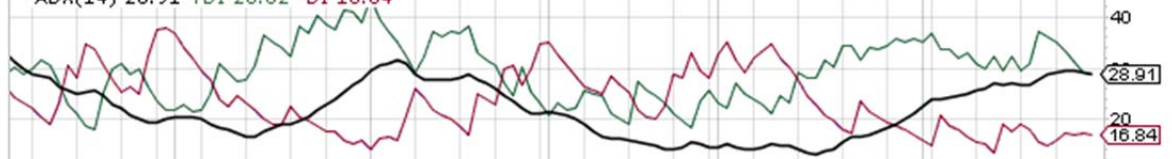
▲ Wm%R(14) -15.77



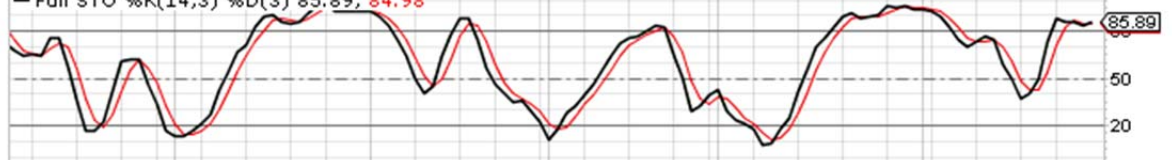
— PPO(12,26,9) 1.770, 1.818, -0.048



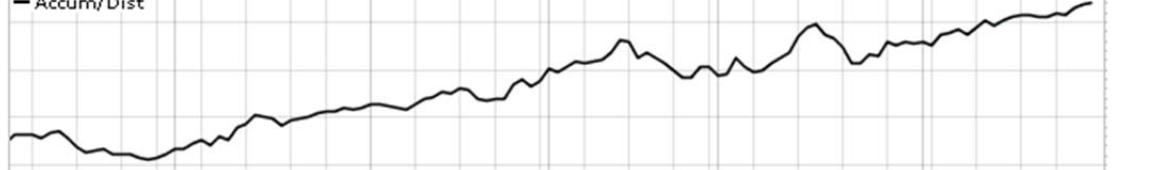
— ADX(14) 28.91 +DI 28.62 -DI 16.84



— Full STO %K(14,3) %D(3) 85.89, 84.98



— Accum/Dist



GG (Goldcorp, Inc.) NYSE
29-Apr-2011

© StockCharts.com

Open 56.00 High 56.20 Low 53.66 Close 55.83 Volume 34.7M Chg +0.16 (+0.29%) ▲



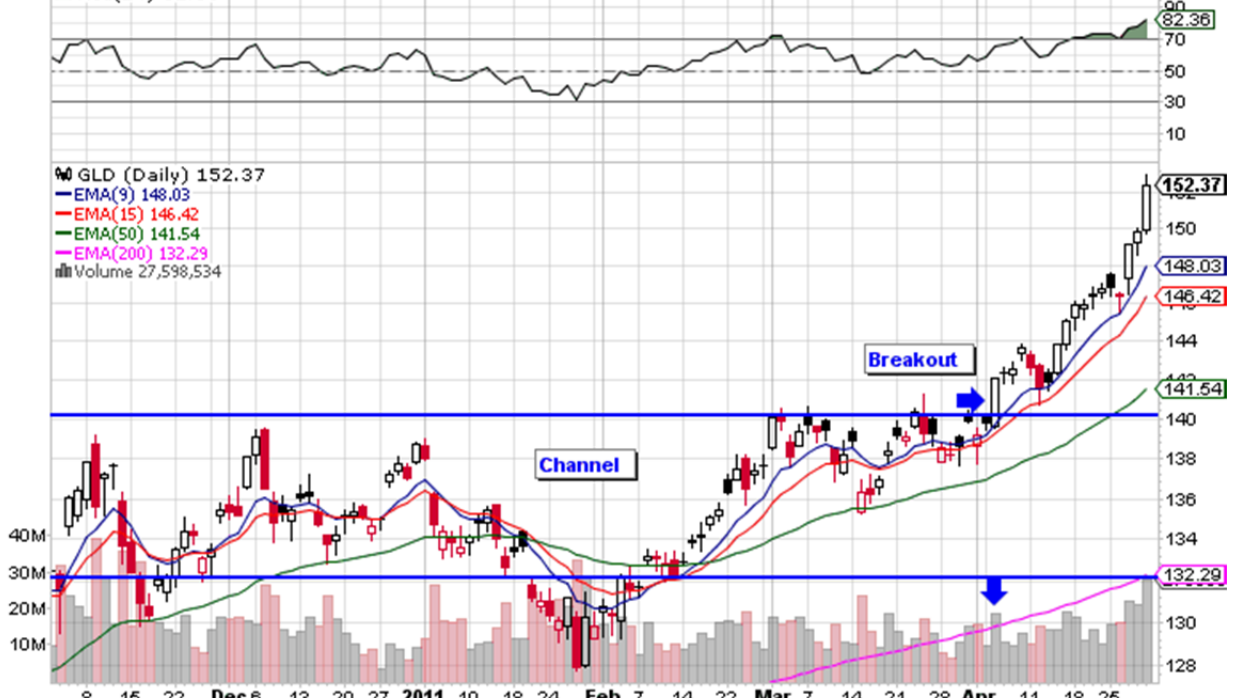
GLD (SPDR Gold Trust Shares) NYSE

© StockCharts.com

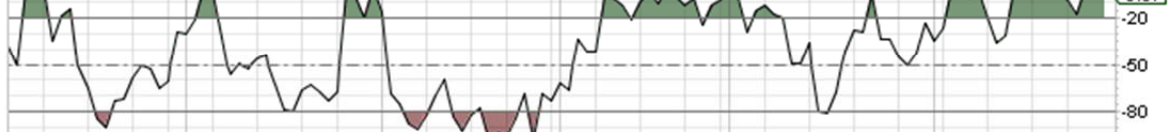
29-Apr-2011

Open 149.90 High 153.03 Low 149.75 Close 152.37 Volume 27.6M Chg +2.55 (+1.70%) ▲

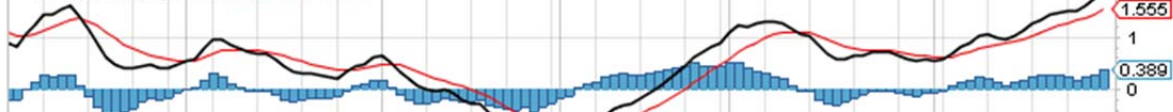
▲ RSI(14) 82.36



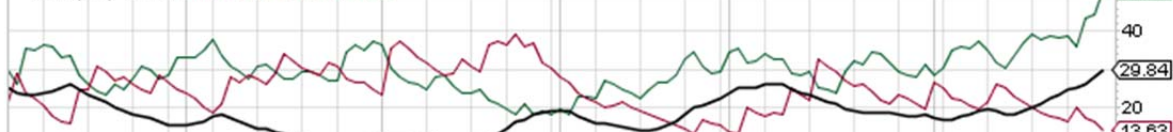
▲ Wm%R(14) -5.37



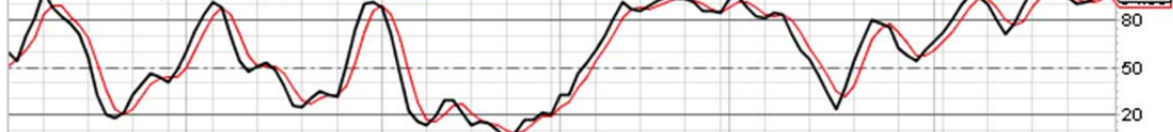
— PPO(12,26,9) 1.943, 1.555, 0.389



— ADX(14) 29.84 +DI 51.22 -DI 13.63



— Full STO %K(14,3) %D(3) 97.52, 94.05



— Accum/Dist



8 15 22 Dec 6 13 20 27 2011 10 18 24 Feb 7 14 22 Mar 7 14 21 28 Apr 11 18 25

29-Apr-2011

Open 16.00 High 17.61 Low 15.59 Close 17.54 Volume 12.6M Chg +1.85 (+10.38%) ▲

RSI(14) 51.29

IBKR (Monthly) 17.54

EMA(9) 16.32

EMA(15) 16.23

EMA(50) undef

EMA(200) undef

Volume 12,554,358



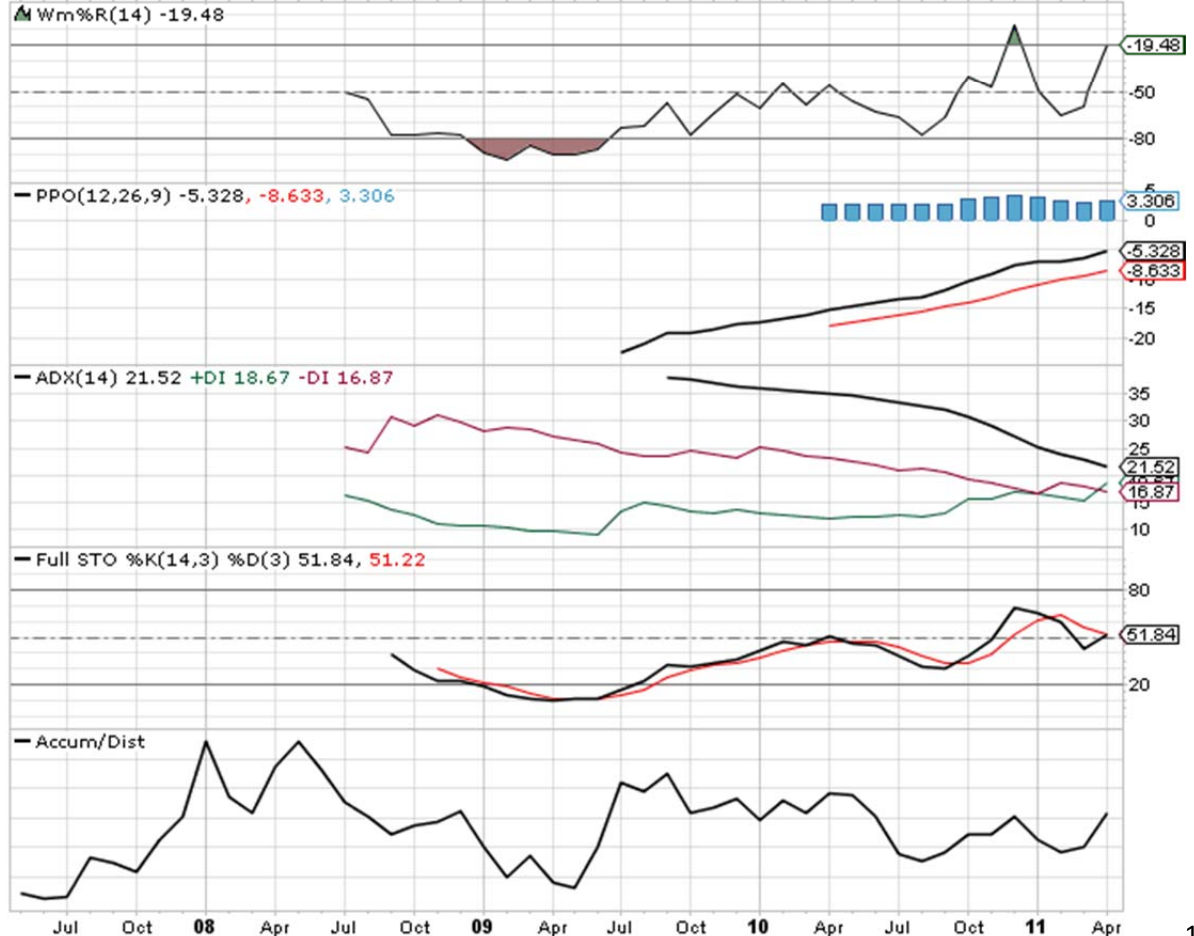
Wm%R(14) -19.48

PPO(12,26,9) -5.328, -8.633, 3.306

ADX(14) 21.52 +DI 18.67 -DI 16.87

Full STO %K(14,3) %D(3) 51.84, 51.22

Accum/Dist



GOOG (Google, Inc.) Nasdaq GS

© StockCharts.com

29-Apr-2011

Open 540.00 High 544.10 Low 538.51 Close 544.10 Volume 4.2M Chg +8.13 (+1.14%) ▲



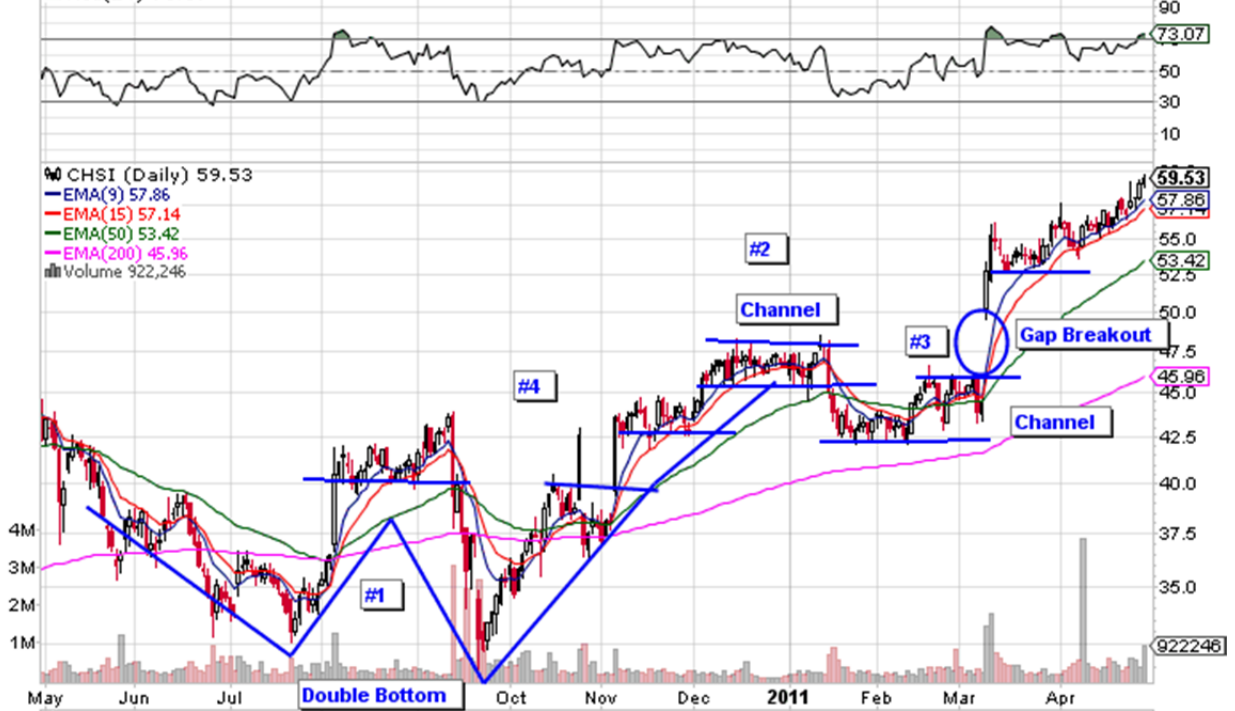
CHSI (Catalyst Health Solutions, Inc.) Nasdaq GS

© StockCharts.com

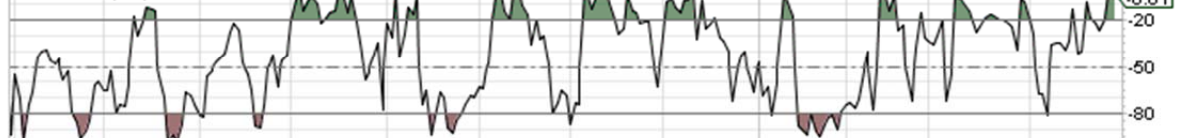
29-Apr-2011

Open 59.06 High 59.85 Low 58.88 Close 59.53 Volume 922.2K Chg +0.38 (+0.64%) ▲

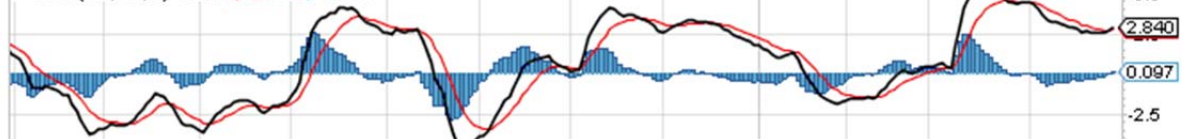
▲ RSI(14) 73.07



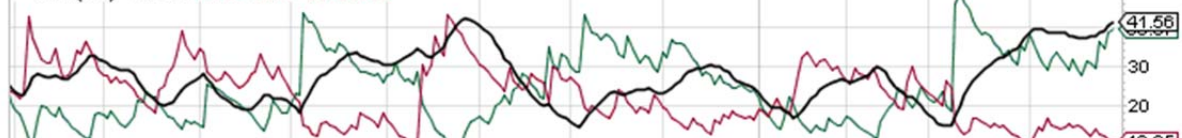
▲ Wm%R(14) -6.61



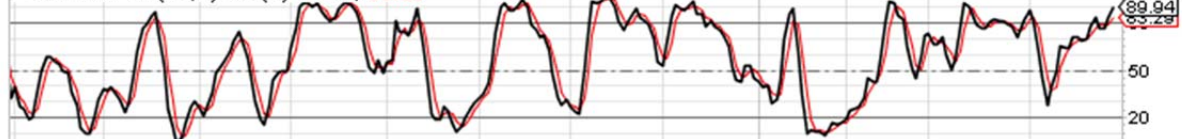
— PPO(12,26,9) 2.840, 2.743, 0.097



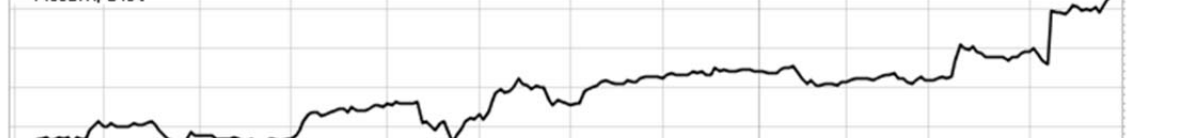
— ADX(14) 41.56 +DI 39.57 -DI 10.65



— Full STO %K(14,3) %D(3) 89.94, 83.29



— Accum/Dist



ChartStyles: - Select - [Save As Default](#) - [Add New](#) - [Replace](#) - [Edit Properties](#) - [Delete](#)

Chart Attributes

Periods: Daily | Range: Fill the Chart | Bar: 5 | Gap: 0 | Extra Bars:
 Type: Candlesticks | Size: 700 | Color Scheme: Default Advanced Options
 Volume: Overlay | Full Quote | Price Labels | Log Scale | Color Prices | Color Volume | Show Legends | Smoothed Lines | Y-Axis Labels

Overlays

Parameters Advanced Options
 Exp Mov. Avg: 9
 Exp Mov. Avg: 15
 Exp Mov. Avg: 50
 Exp Mov. Avg: 200
 - None -
 [About Overlays - Glossary](#)

Indicators

Indicators	Parameters	Position	Reorder	Color	Height	Opacity	Overlay	Parameters
RSI	14	Above	△ ▽	- Auto -	- Auto -	- Auto -	- None -	
Williams %R	14	Below	△ ▽	- Auto -	- Auto -	- Auto -	- None -	
PPO	12,26,9	Below	△ ▽	- Auto -	- Auto -	- Auto -	- None -	
Wilder's DMI (ADX)	14	Below	△ ▽	- Auto -	- Auto -	- Auto -	- None -	
Full Stochastics	14,3,3	Below	△ ▽	- Auto -	- Auto -	- Auto -	- None -	
Accum/Dist		Below	△ ▽	- Auto -	- Auto -	- Auto -	- None -	
- None -		Below	△ ▽					

[About Indicators - Glossary](#) Reset All Heights: - Auto -

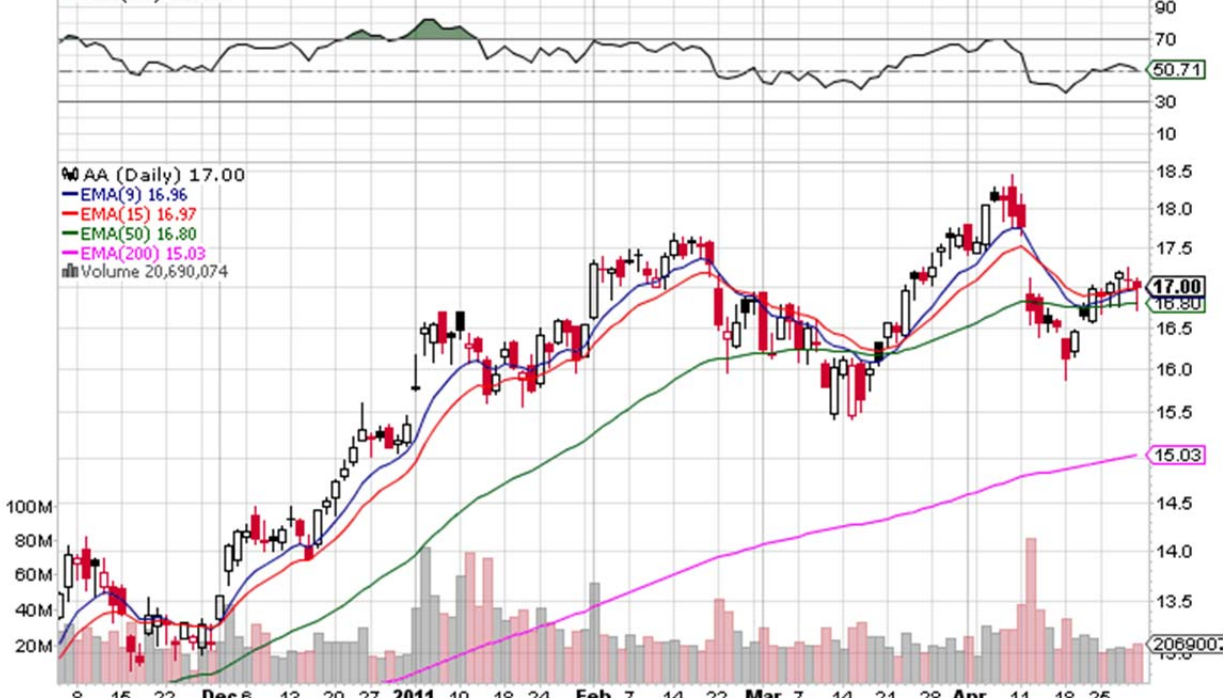
AA (Alcoa, Inc.) NYSE

© StockCharts.com

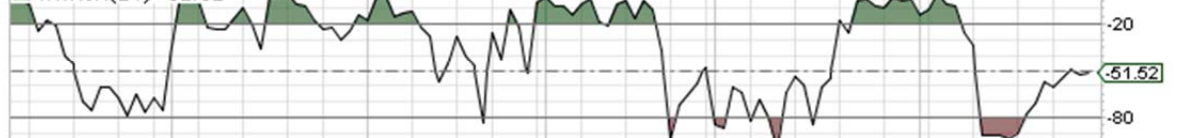
29-Apr-2011

Open 17.06 High 17.12 Low 16.71 Close 17.00 Volume 20.7M Chg -0.09 (-0.53%)

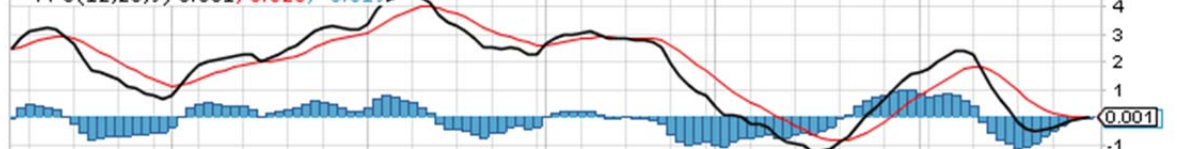
▲ RSI(14) 50.71



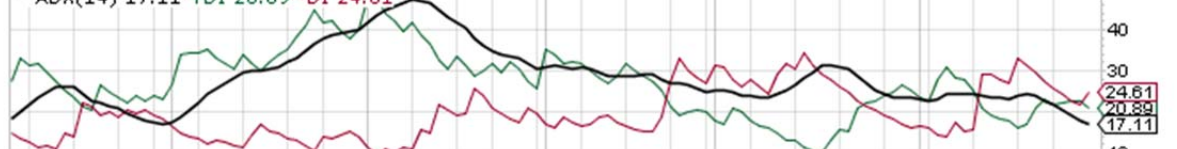
▲ Wm%R(14) -51.52



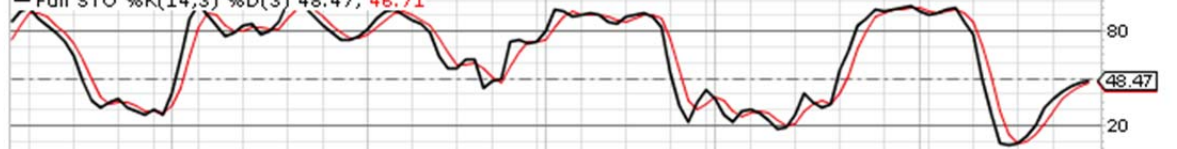
— PPO(12,26,9) 0.001, 0.020, -0.019



— ADX(14) 17.11 +DI 20.89 -DI 24.61



— Full STO %K(14,3) %D(3) 48.47, 46.71



— Accum/Dist



8 15 22 Dec 6 13 20 27 2011 10 18 24 Feb 7 14 22 Mar 7 14 21 28 Apr 11 18 25

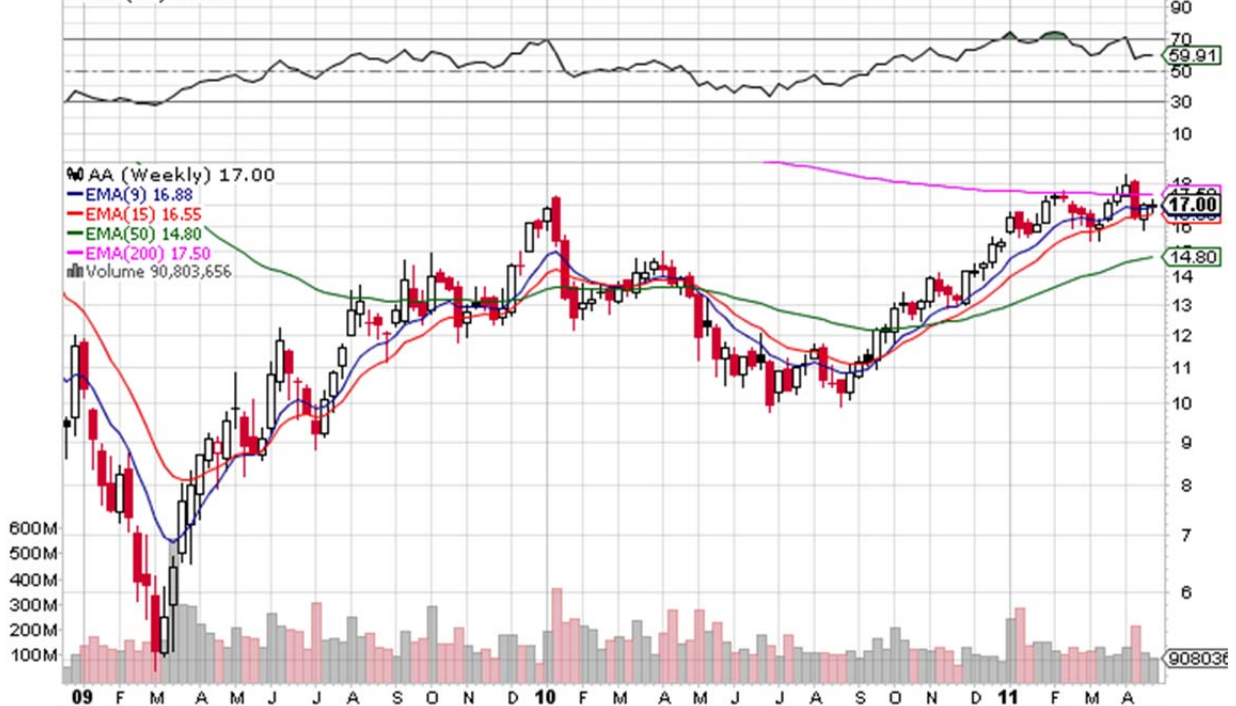
AA (Alcoa, Inc.) NYSE

© StockCharts.com

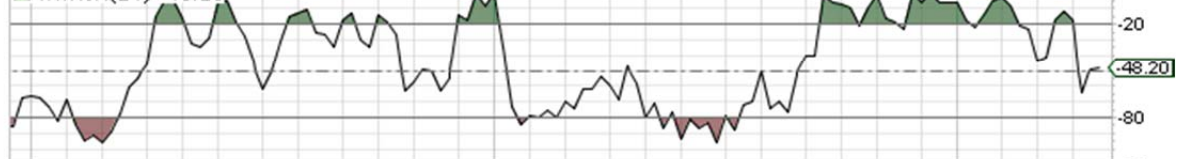
29-Apr-2011

Open 16.94 High 17.24 Low 16.66 Close 17.00 Volume 90.8M Chg +0.03 (+0.18%) ▲

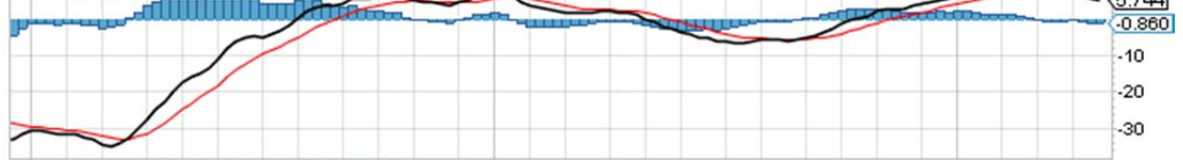
▲ RSI(14) 59.91



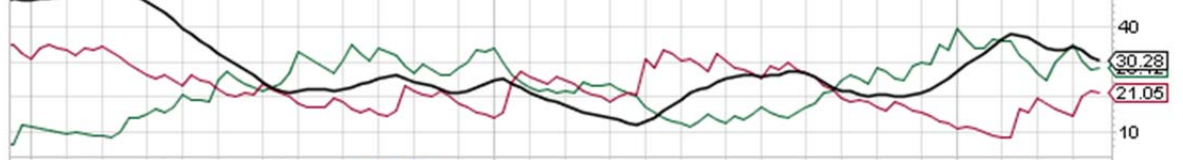
▲ Wm%R(14) -48.20



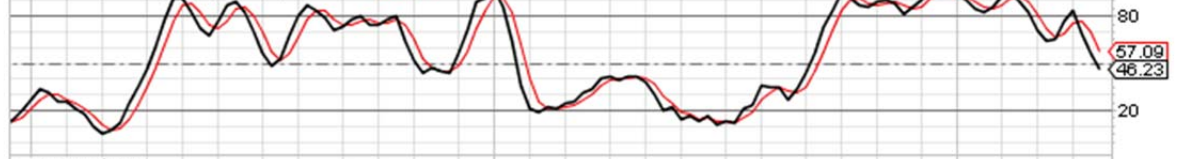
- PPO(12,26,9) 5.744, 6.603, -0.860



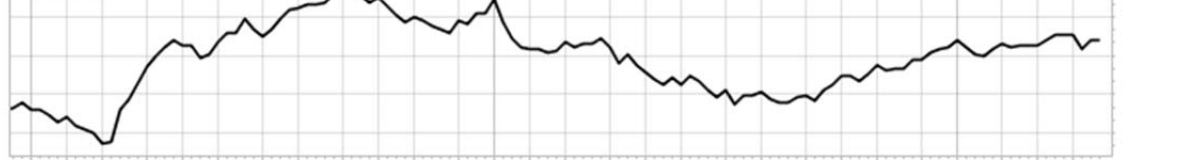
- ADX(14) 30.28 +DI 28.12 -DI 21.05



- Full STO %K(14,3) %D(3) 46.23, 57.09



- Accum/Dist



09 F M A M J J A S O N D 10 F M A M J J A S O N D 11 F M A

OPTION CHAIN FOR URBAN OUTFITTERS INC

In-the-money

CALLS								PUTS							
Hide May, 2011 Options															
Symbol	Last	Change	Vol	Bid	Ask	Open Int.	Strike Price	Symbol	Last	Change	Vol	Bid	Ask	Open Int.	
quote				5.40	6.20		26.00	quote	0.20			0.10		56.00	
quote				4.50	5.20		27.00	quote	0.12		5.00	0.10	0.20	70.00	
quote	4.10			3.60	3.80	268.00	28.00	quote	0.22		15.00	0.20	0.25	705.00	
quote	2.65			2.80	3.00	1,027	29.00	quote	0.40		25.00	0.35	0.45	1,026	
quote	2.55			2.05	2.20	280.00	30.00	quote	0.65		18.00	0.60	0.70	1,277	
quote	1.75		5.00	1.45	1.55	990.00	31.00	quote	0.95			1.00	1.10	1,817	
							Stock Price =	31.47							
quote	1.05		46.00	0.95	1.05	1,141	32.00	quote	1.35		2.00	1.50	1.60	163.00	
quote	0.75		163.00	0.60	0.70	793.00	33.00	quote	2.15		151.00	2.15	2.25	5,162	
quote	0.45		64.00	0.35	0.45	656.00	34.00	quote	2.55			2.55	3.00	1,522	
quote	0.25		24.00	0.20	0.25	654.00	35.00	quote	3.60			3.50	3.90	49.00	
quote	0.20			0.10	0.20	282.00	36.00	quote				4.10	4.80		
quote	0.13		20.00	0.05	0.15	130.00	37.00	quote							
Hide June, 2011 Options															
Symbol	Last	Change	Vol	Bid	Ask	Open Int.	Strike Price	Symbol	Last	Change	Vol	Bid	Ask	Open Int.	
quote				13.40	15.70		17.50	quote					0.15		
quote	13.00			11.40	12.10	4.00	20.00	quote					0.15	38.00	
quote				8.90	9.60	12.00	22.50	quote	0.15				0.15	71.00	
quote	6.70			6.50	7.10	30.00	25.00	quote	0.15		0.10	0.15	139.00		
quote				5.50	6.30		26.00	quote	0.25			0.15	0.25	57.00	
quote	11.00			4.60	5.40	39.00	27.00	quote	0.35			0.25	0.35	164.00	
quote	4.10			3.80	4.60	295.00	28.00	quote	0.45			0.45	0.50	112.00	
quote	4.90			3.10	3.30	570.00	29.00	quote	0.40			0.85	0.75	88.00	
quote	2.85			2.45	2.55	696.00	30.00	quote	0.95		25.00	1.00	1.05	596.00	
quote	2.15			1.85	1.95	696.00	31.00	quote	1.30			1.40	1.50	510.00	
							Stock Price =	31.47							
quote	1.65		10.00	1.35	1.50	1,612	32.00	quote	1.75			1.90	2.00	355.00	
quote	1.20		1.00	0.95	1.10	909.00	33.00	quote	2.20			2.50	2.60	848.00	
quote	0.71		4.00	0.70	0.80	1,102	34.00	quote	1.95			3.20	3.30	651.00	
quote	0.60		144.00	0.50	0.55	11,703	35.00	quote	3.70			3.80	4.10	13,588	
quote	0.45		10.00	0.30	0.40	544.00	36.00	quote	5.00			4.60	5.00	59.00	
quote	0.25		20.00	0.20	0.25	2,165	37.00	quote	6.00			5.20	5.90	315.00	
quote	0.20			0.10	0.20	646.00	38.00	quote				6.10	6.80	259.00	
quote	0.15			0.05	0.15	453.00	39.00	quote				7.00	7.80	210.00	
quote	0.10				0.15	241.00	40.00	quote				8.00	8.80	96.00	
quote	0.04			0.05	0.10	195.00	41.00	quote				9.00	9.70	22.00	
quote	0.00				0.10	100.00	42.00	quote				10.00	10.70	61.00	

MRK (Merck & Co., Inc.) NYSE

© StockCharts.com

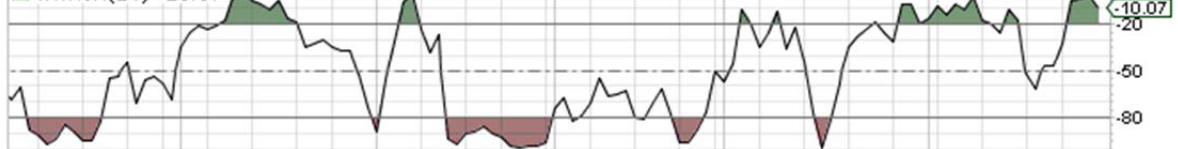
29-Apr-2011

Open 35.98 High 36.25 Low 35.63 Close 35.95 Volume 18.9M Chg +0.18 (+0.50%) ▲

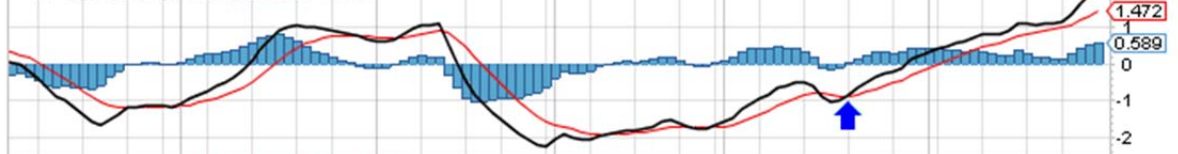
▲ RSI(14) 76.31



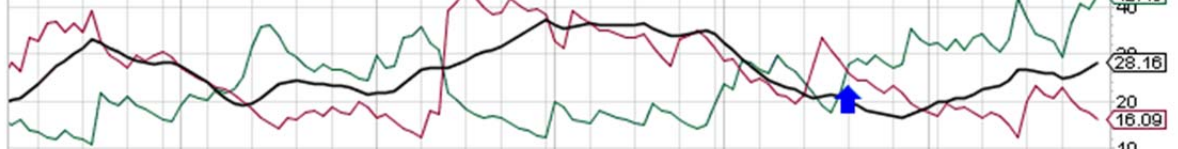
▲ Wm%R(14) -10.07



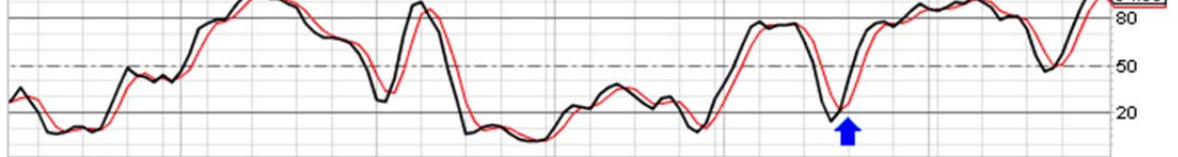
- PPO(12,26,9) 2.061, 1.472, 0.589



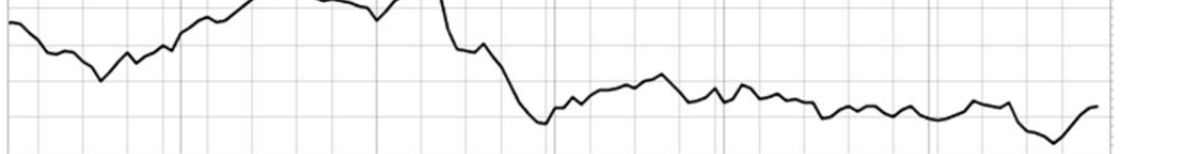
- ADX(14) 28.16 +DI 42.40 -DI 16.09



- Full STO %K(14,3) %D(3) 94.88, 92.56



- Accum/Dist

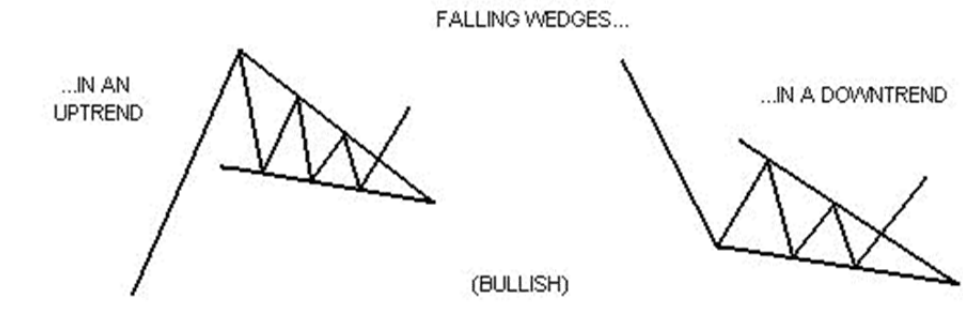


8 15 22 Dec 6 13 20 27 2011 10 18 24 Feb 7 14 22 Mar 7 14 21 28 Apr 11 18 25

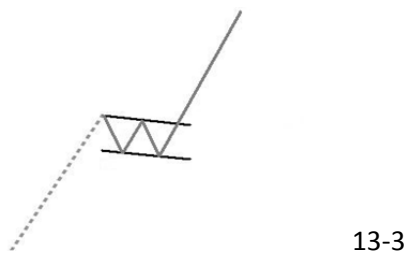
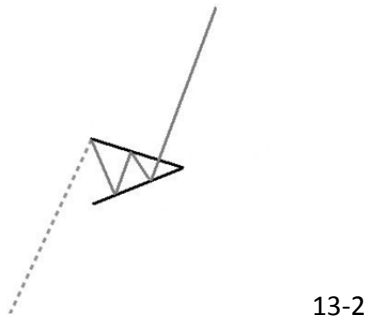
MRK Merck & Co Inc (NYSE)		35.95 ▲ 0.18		
	Open:	35.98	High:	36.25
	Low:	35.63	Volume:	18,934,404
	Yield:	4.23%	P/E Ratio:	69.3694
	Bid:	n/a	Ask:	n/a
	Ex Div. Date:	3/11/2011	Ex Div. Amount:	0.38
	optionshouse \$3.95 STOCK TRADES Start Saving Now			

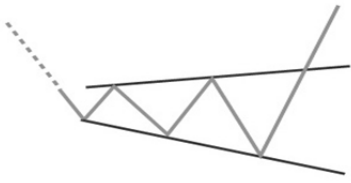
OPTION CHAIN FOR MERCK & CO INC In-the-money														
CALLS							PUTS							
Show May, 2011 Options														
Show June, 2011 Options														
Hide July, 2011 Options														
Symbol	Last	Change	Vol	Bid	Ask	Open Int.	Strike/Price	Symbol	Last	Change	Vol	Bid	Ask	Open Int.
quote				13.70	18.05	56.00	20.00	quote	0.02			0.01	0.04	1,981
quote				11.35	15.45	8.00	22.50	quote	0.04			0.02	0.05	151.00
quote	9.05			9.15	12.75	88.00	25.00	quote	0.04		2.00	0.04	0.06	10,887
quote	8.10			7.50	8.00	321.00	28.00	quote	0.10			0.06	0.09	1,121
quote	5.20			6.95	7.00	119.00	29.00	quote	0.14			0.09	0.10	825.00
quote	6.00	149.00		5.95	6.05	1,673	30.00	quote	0.12	62.00		0.12	0.15	31,107
quote	4.90	10.00		4.95	5.05	1,749	31.00	quote	0.19	79.00		0.16	0.19	6,841
quote	4.04	512.00		4.00	4.10	3,079	32.00	quote	0.25	398.00		0.23	0.27	8,107
quote	3.20	79.00		3.10	3.15	7,306	33.00	quote	0.37	162.00		0.36	0.38	14,331
quote	2.27	134.00		2.25	2.29	16,106	34.00	quote	0.57	186.00		0.56	0.58	8,594
quote	1.49	1,699		1.51	1.54	25,004	35.00	quote	0.86	188.00		0.87	0.89	6,904
Stock Price as of 3/11/2011 04:02:15 PM														
quote	0.94		562.00	0.93	0.95	14,693	36.00	quote	1.30		397.00	1.30	1.34	2,445
quote	0.50		1,114	0.51	0.53	15,765	37.00	quote	1.85		3.00	1.90	1.95	1,682
quote	0.27		354.00	0.25	0.27	4,169	38.00	quote	2.62		81.00	2.65	2.70	974.00
quote	0.12		46.00	0.11	0.13	2,846	39.00	quote	3.55		103.00	3.50	3.60	390.00
quote	0.07		8.00	0.05	0.08	7,501	40.00	quote	4.45	10.00		4.45	4.55	273.00
quote	0.04				0.04	1,284	41.00	quote	5.95			5.40	5.50	30.00
quote					0.01	139.00	45.00	quote				7.60	10.75	22.00

12-6



13-1

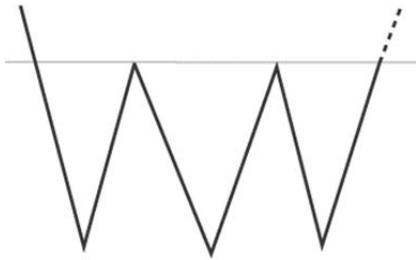




13-4



13-5



13-6



13-7

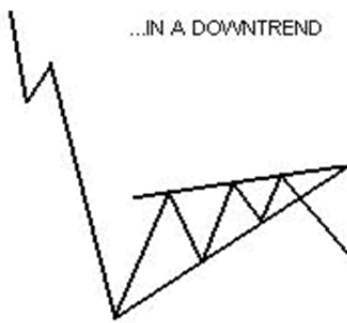
...IN AN UPTREND



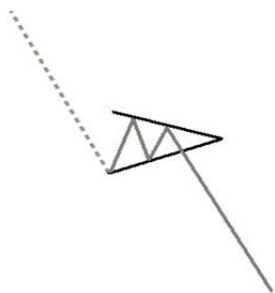
RISING WEDGES...

...IN A DOWNTREND

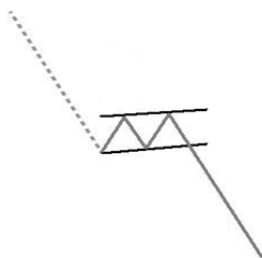
(BEARISH)



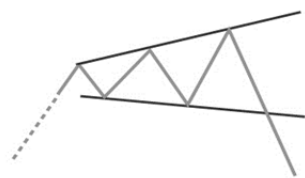
13-8



13-9



13-10



13-11



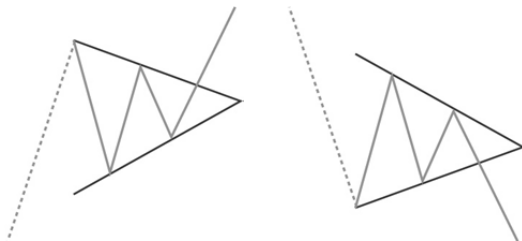
13-12



13-13



13-14



13-15

Multiple Candlestick Patterns: 13-16

These wonderful chart patterns and descriptions are

Courtesy of MiniDowFuturesTrader.com



Bullish Engulfing Reversal Pattern

1. Bullish positive light candle appears after a dark candle in a downtrend.
2. Bullish light candle open gaps below the previous dark candle's close, but recovers to close above the previous dark candle's opening price, thus "engulfing" the dark candle.



Bearish Engulfing Reversal Pattern

1. Bearish negative dark candle appears after a light candle in an uptrend
2. Bearish dark candle open gaps above the previous light candle's close, but retraces to close below the previous light candle's opening price, thus "engulfing" the light candle.



Bullish 3 Outside Up Reversal Pattern

1. A Bullish Engulfing pattern forms.
2. The next (third) candle is positive and closes above the previous day's close.

This pattern's strength is enhanced if volume on the first candle is low, but volume on the second candle is higher.

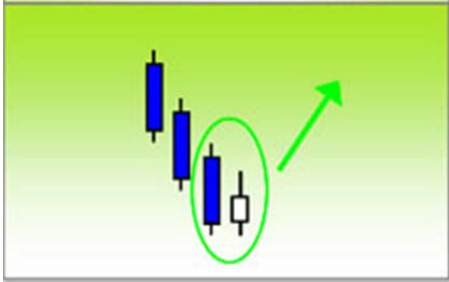


Bearish 3 Outside Down Reversal Pattern

1. A Bearish Engulfing pattern forms.
2. The next (third) candle is negative and closes below the previous day's close.

This pattern's strength is enhanced if volume on the first candle is low, but volume on the second candle is higher.

Bullish Harami Reversal



Bullish Harami Reversal Pattern

1. A long dark candle appears in a downtrend.
2. A short light candle appears next, but is engulfed by the previous long dark candle.

Bearish Harami Reversal



Bearish Harami Reversal Pattern

1. A long light candle appears in an uptrend.
2. A short dark candle appears next, but is engulfed by the previous light dark candle.

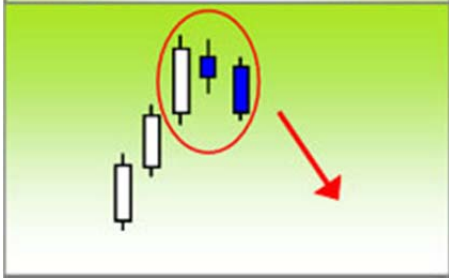
Bullish 3 Inside Up Reversal



Bullish 3 Inside Up Reversal Pattern

1. A Bullish Harami Cross reversal pattern appears.
2. The third bullish longer light candle confirms the Bullish Harami reversal

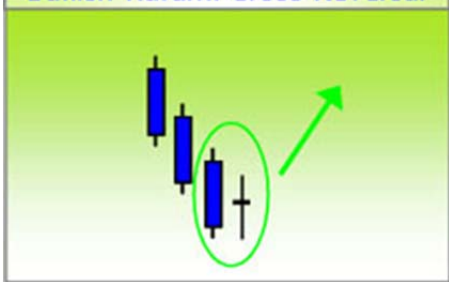
Bearish 3 Inside Down Reversal



Bearish 3 Inside Down Reversal Pattern

1. A Bearish Harami Cross reversal pattern appears.
2. The third bearish longer dark candle confirms the Bearish Harami reversal

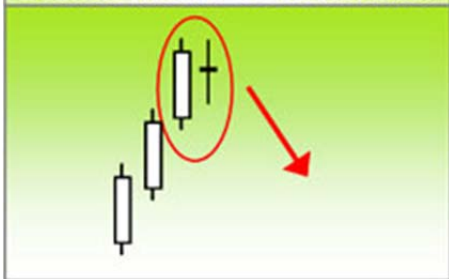
Bullish Harami Cross Reversal



Bullish Harami Cross Reversal Pattern

1. A long dark candle appears in a downtrend.
2. A light doji candle appears next, but is engulfed by the previous long dark candle (like Bullish Harami, but with a doji).

Bearish Harami Cross Reversal



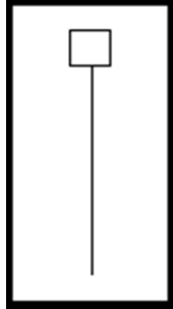
Bearish Harami Cross Reversal Pattern

1. A long light candle appears in an uptrend.
2. A dark doji candle appears next, but is engulfed by the previous light dark candle.

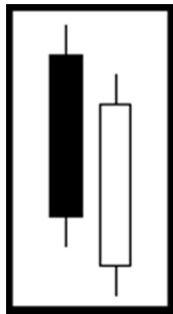
Charts Courtesy of MiniDowFuturesTrader.com (Additional chart patterns shown on their site under candlestick charting.)

Candlestick Patterns (Bullish, Bearish, Reversal and Neutral):

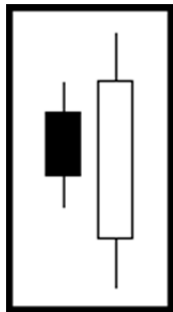
Bullish (13-16)



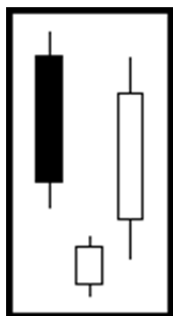
Hammer: This is a bullish candlestick if it occurs after a downtrend. If the line occurs after an uptrend, it is called a hanging man. A hammer is identified by a small real body of prices between the open and close and a long shadow. This long shadow line signifies that the low was significantly lower than the open, high and close.



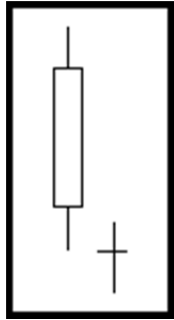
Piercing Line: is a bullish candlestick pattern and the opposite of a dark cloud cover. In this pattern, the 1st candlestick is a long red candle and the 2nd candle is a long white. The 2nd candle opens lower than the 1st, but it closes more than half way above the first candle's real body.



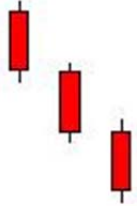
Bullish Engulfing: is a strong bullish pattern if it occurs after a significant downtrend. It acts as a reversal pattern and occurs when a small red candle is engulfed by a large white candle.



Morning Star: is a bullish pattern that signals a potential bottom. The star indicates a possible reversal and the white candle confirms the signal. The star can be empty or hollow.

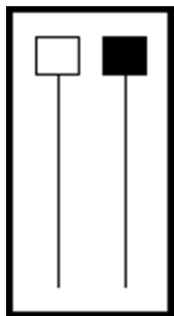


Bullish Doji Star: A star indicates a reversal and a doji indicates indecision. Thus, this pattern usually indicates a reversal after a period of indecision and should be confirmed before entering a trade. The first candle can be filled or hollow.

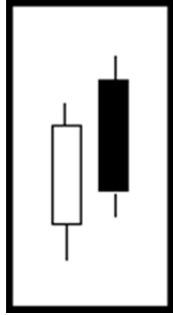


Three Black Crows: An odd name for three red candles that appear consecutively, closing near or below the previous candle's low. This is a bearish pattern.

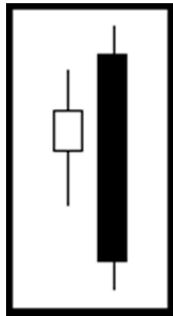
Bearish (13-17)



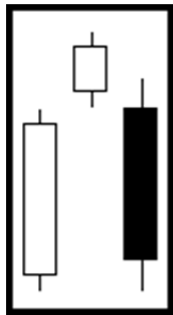
Hanging Man: This is a bearish candlestick if it occurs after an uptrend.



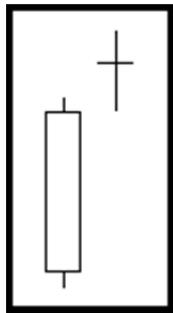
Dark Cloud Cover: This is a bearish pattern and is more significant if the 2nd candle's body is below the center of the previous candle's body.



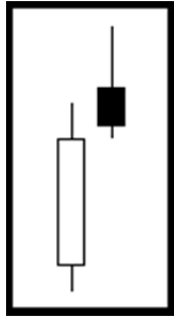
Bearish Engulfing Candle: This is a strong bearish pattern if it occurs after a significant uptrend. It acts as a reversal pattern. It occurs when a small bullish white candle is engulfed by a large bearish red candle.



Evening Star: is a bearish pattern that signals a potential top. The star indicates a possible reversal and the red candle confirms this. The star can be red or white.



Doji Star: a star indicates a reversal and a doji indicates indecision. Thus, this pattern usually points out a reversal following a period of indecision and should be confirmed before trading a doji star.

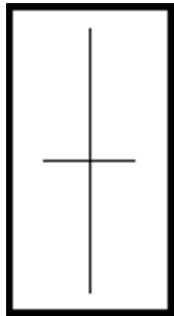


Shooting Star: This pattern suggests a minor reversal when it appears after a rally. The star's body must appear near the candle's low and the candle should have a long upper shadow.

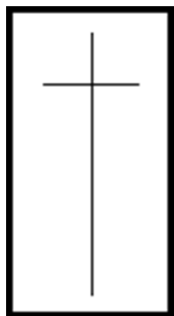


Three White Soldiers: This pattern consists of three relatively long white candles that close on or near their highs. This is a bearish pattern.

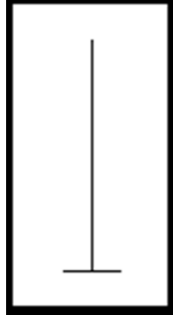
Reversal Patterns (13-18)



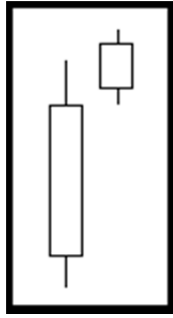
Long –Legged Doji: This candle often signifies a turning point. It occurs when the open and closing price are the same and the range between the high and the low are relatively large.



Dragonfly Candle: This candle also signals a turning point. It occurs when the open and closing price are the same, and the low is significantly lower than the open, high and closing prices.

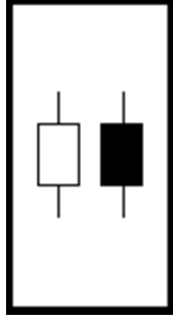


Gravestone Doji: This candle also signifies a turning point. It occurs when the open and close and low prices are the same, and the high is significantly higher than the open, low and closing prices.

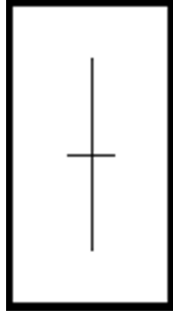


Stars: Stars indicate reversals. A star is a candle with a small real body that occurs after a candle with a much larger real body, where the bodies do not overlap. The shadows may touch.

Neutral Patterns (13-19)



Spinning Tops: These are neutral candles. They occur when the distance between the high and low, and the distance between the open and close, are relatively small.



Doji: This candle implies indecision. The security opened and closed at the same price. These candles appear in several different candle patterns.

Double Doji: two adjacent dojis imply that a forceful move will follow a breakout from the current period of indecision.